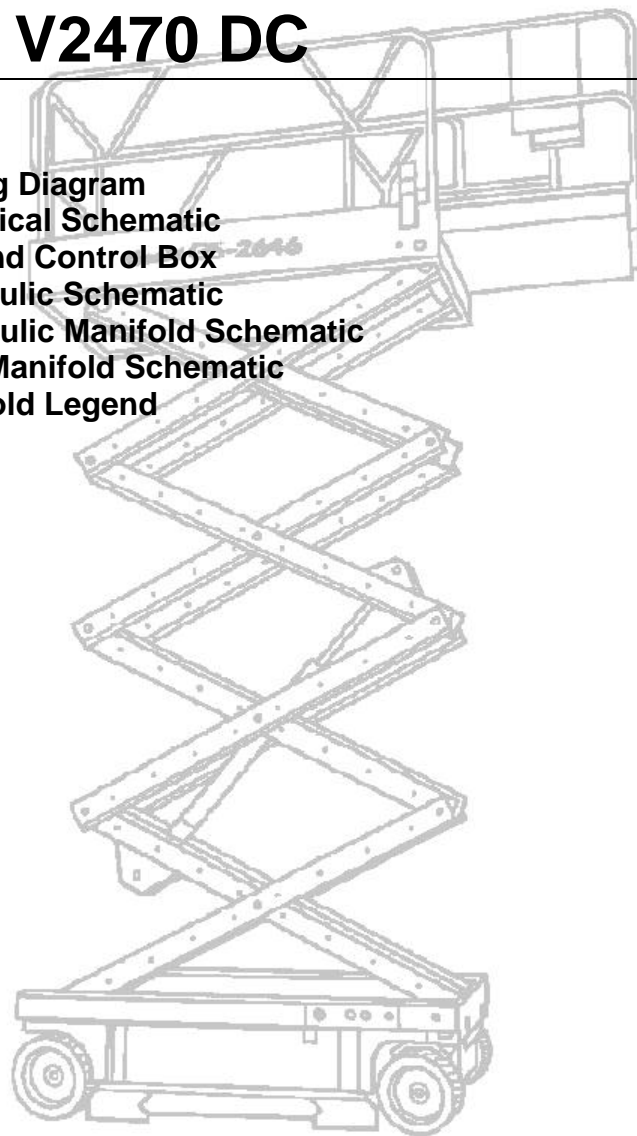


# V2 V1832, V1854, V2470 DC

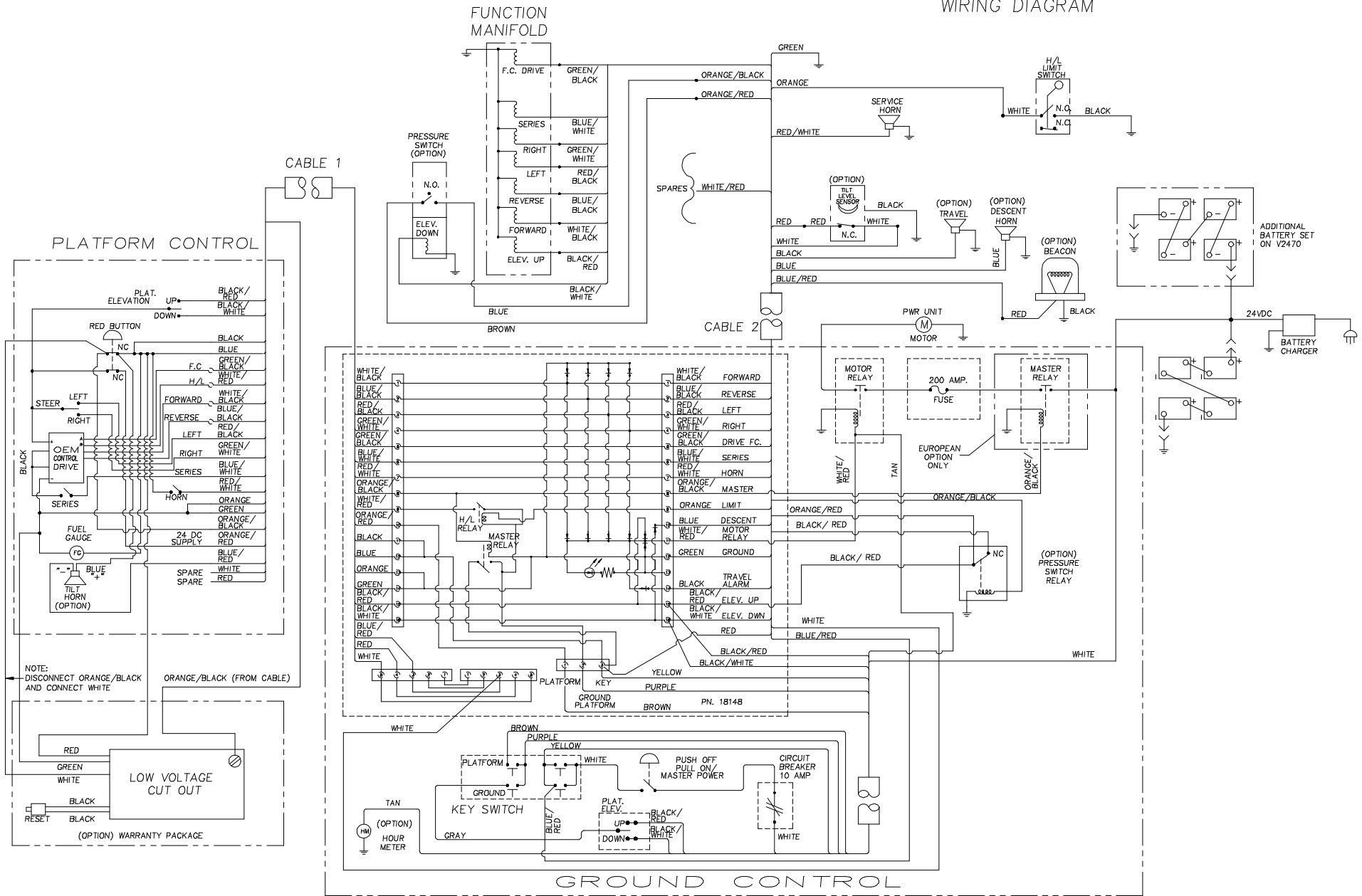
Page: Model:

Serial Number:

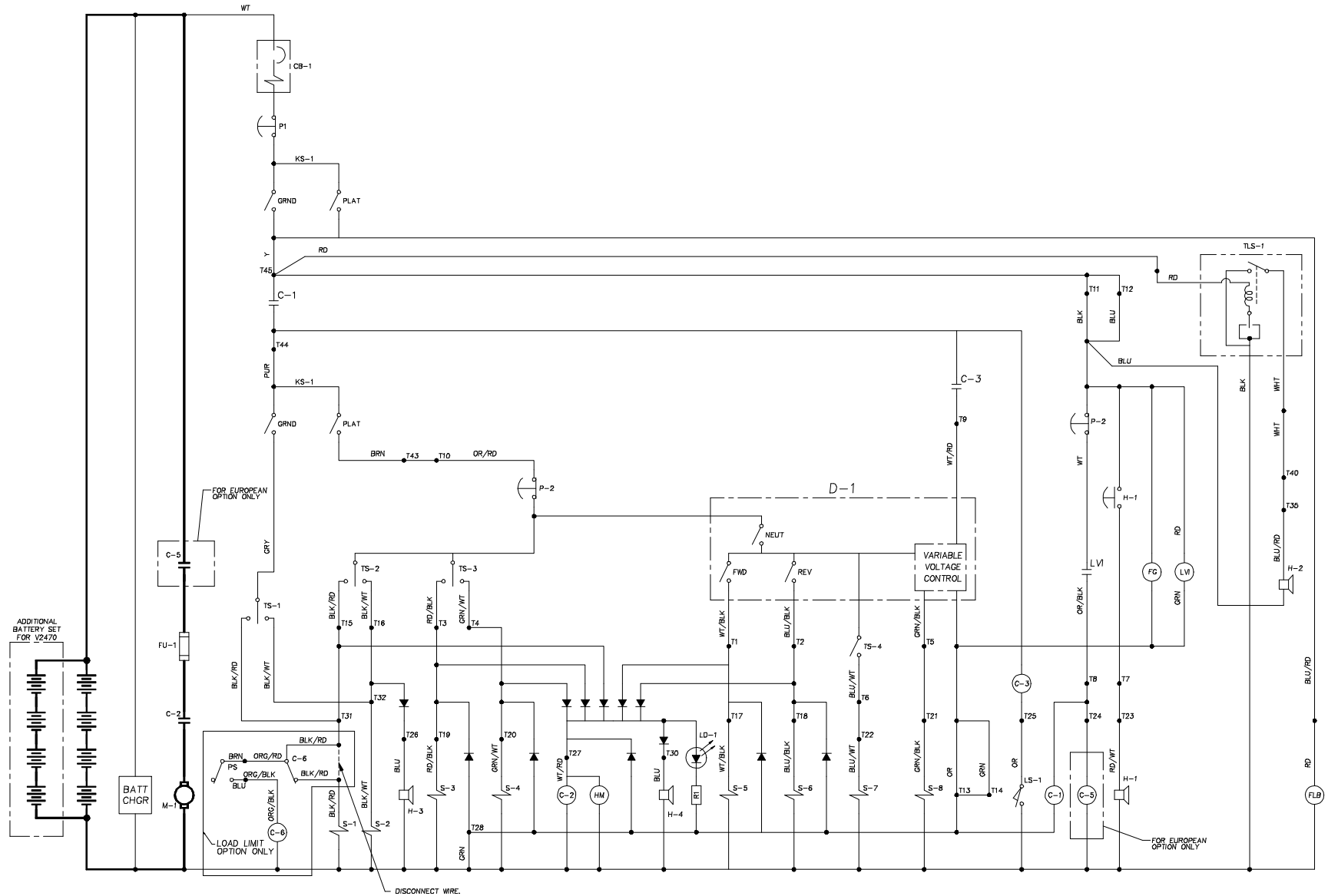
- V2-01 V1832 1854 2470 DC - Wiring Diagram
- V2-02 V1832 1854 2470 DC - Electrical Schematic
- V2-03 V1832 1854 2470 DC - Ground Control Box
- V2-04 V1832 1854 2470 DC - Hydraulic Schematic
- V2-05 V1832 1854 2470 DC - Hydraulic Manifold Schematic
- V2-06 V1832 1854 DC - Hydraulic Manifold Schematic
- V2-07 V2470 DC - Hydraulic Manifold Legend



# V1832 V1854 V2470 DC WIRING DIAGRAM



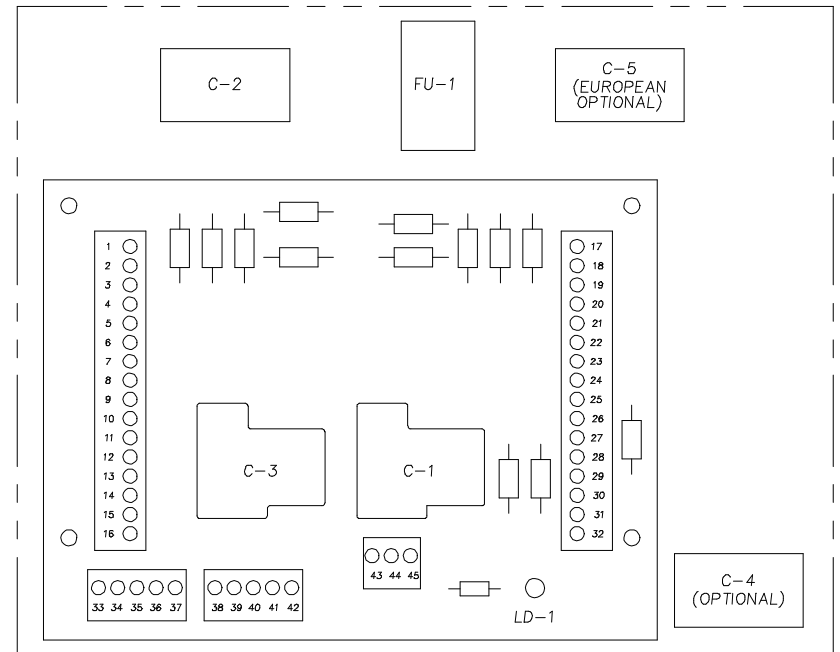
V1832 V1854 V2470 DC  
ELECTRICAL SCHEMATIC



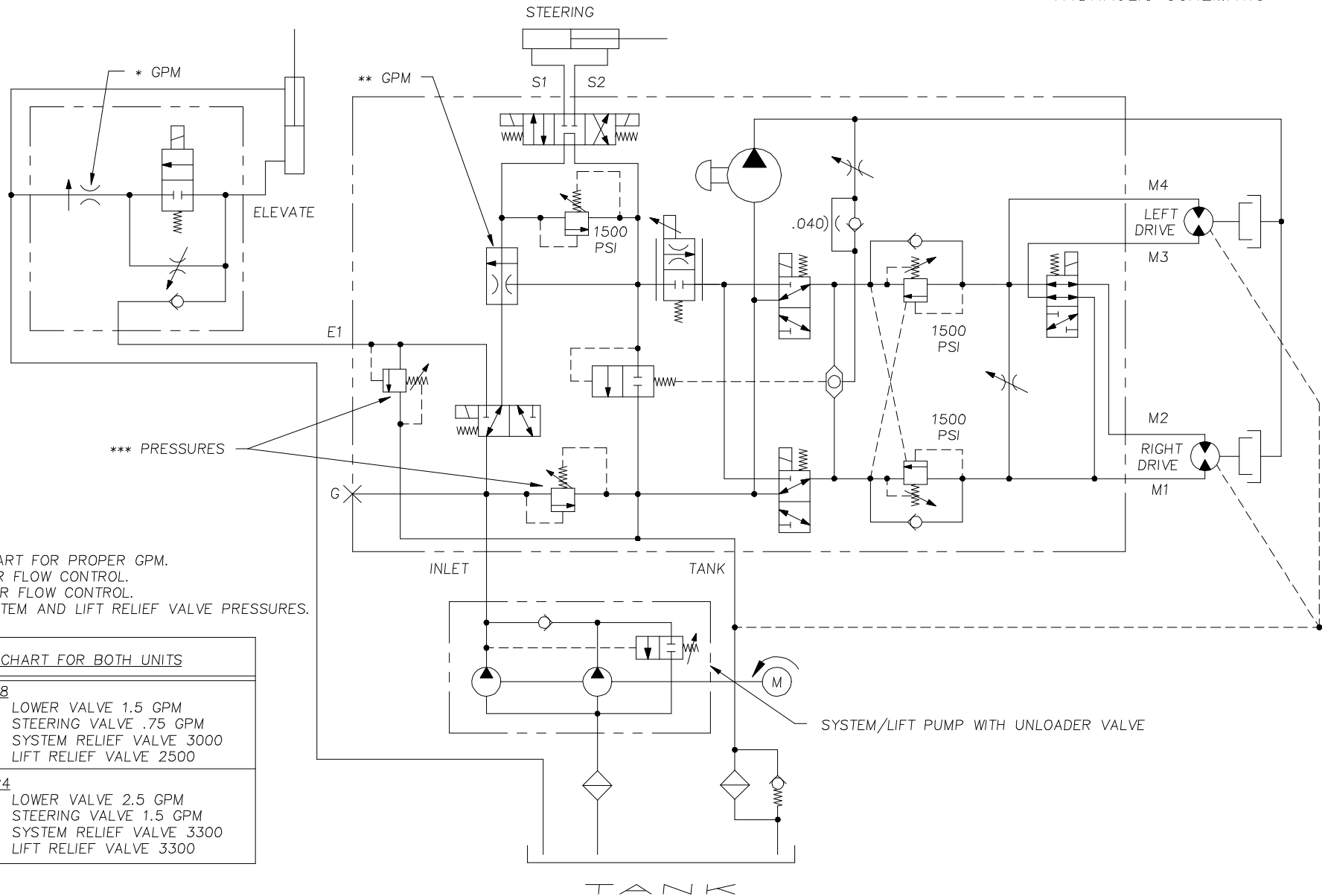
V1832 V1854 V2470 DC  
ELECTRICAL SCHEMATIC LEGEND  
GROUND CONTROL BOX

# GROUND CONTROL BOX

CB1	CONTROL CIRCUIT 10 AMP CIRCUIT BREAKER	GROUND CONTROL STATION
C1	24 VOLT CONTROL CIRCUIT MASTER RELAY	GROUND CONTROL STATION
C2	24 VOLT POWER CIRCUIT MASTER RELAY	GROUND CONTROL STATION
C4	24 VOLT TILT LEVEL ALARM RELAY (NC)	GROUND CONTROL STATION
C6	24 VOLT LOAD LIMIT RELAY (LOAD LIMIT OPTION ONLY)	GROUND CONTROL STATION
C5	24 VOLT MOTOR START RELAY (EUROPEAN MODELS ONLY)	GROUND CONTROL STATION
D1	DRIVE FORWARD/REVERSE PROPORTIONAL CONTROL JOYSTICK	PLATFORM CONTROL STATION
FG	FUEL GAUGE/BATTERY CHARGE INDICATOR	PLATFORM CONTROL STATION
FLB	OPERATING MACHINE FLASHING BEACON	CHASSIS
FU1	200 AMP POWER CIRCUIT FUSE	GROUND CONTROL STATION
H1	SERVICE HORN BUTTON AND INDICATOR	PLATFORM CONTROL STATION/CHASSIS
H2	TILT LEVEL INDICATOR	PLATFORM CONTROL STATION
H3	ELEVATE SYSTEM DESCENT INDICATOR	CHASSIS
H4	DRIVE SYSTEM TRAVEL INDICATOR	CHASSIS
HM	CHASSIS	GROUND CONTROL STATION
KS1	KEY SWITCH-SELECT GROUND OR PLATFORM CONTROLS	GROUND CONTROL STATION
LD1	CONTROL CIRCUIT LIGHT EMITTING DIODE	GROUND CONTROL STATION
LS1	DRIVE SPEED LIMIT SWITCH (SHOWN WITH PLATFORM UP)	GROUND CONTROL STATION
LV1	LOW VOLTAGE INTERRUPT SYSTEM	CHASSIS
M1	HYDRAULIC POWER UNIT MOTOR	PLATFORM CONTROL STATION
P1	POWER ON/OFF BUTTON	CHASSIS
P2	POWER ON/OFF BUTTON	GROUND CONTROL STATION
PS	PRESSURE SWITCH (NO) (LOAD LIMIT OPTION ONLY)	PLATFORM CONTROL STATION
S1	ELEVATE UP DIRECTIONAL CONTROL SOLENOID	LIFT CYLINDER
S2	ELEVATE DOWN DIRECTIONAL CONTROL SOLENOID	HYDRAULIC MANIFOLD
S3	STEER LEFT DIRECTIONAL CONTROL SOLENOID	ELEVATE CYLINDER
S4	STEER RIGHT DIRECTIONAL CONTROL SOLENOID	HYDRAULIC MANIFOLD
S5	DRIVE FORWARD DIRECTIONAL CONTROL SOLENOID	HYDRAULIC MANIFOLD
S6	DRIVE REVERSE DIRECTIONAL CONTROL SOLENOID	HYDRAULIC MANIFOLD
S7	DRIVE SPEED HIGH/LOW CONTROL SOLENOID	HYDRAULIC MANIFOLD
S8	DRIVE PROPORTIONAL CONTROL SOLENOID	HYDRAULIC MANIFOLD
T1-T45	WIRING CONNECTION TERMINALS	GROUND CONTROL STATION
TLS1	TILT LEVEL SENSOR	CHASSIS
TS1	PLATFORM UP/DOWN TOGGLE SWITCH	GROUND CONTROL STATION
TS2	ELEVATE UP/DOWN TOGGLE SWITCH	PLATFORM CONTROL STATION
TS3	STEER LEFT/RIGHT TOGGLE SWITCH	PLATFORM CONTROL STATION
TS4	DRIVE SPEED HIGH/LOW TOGGLE SWITCH	PLATFORM CONTROL STATION



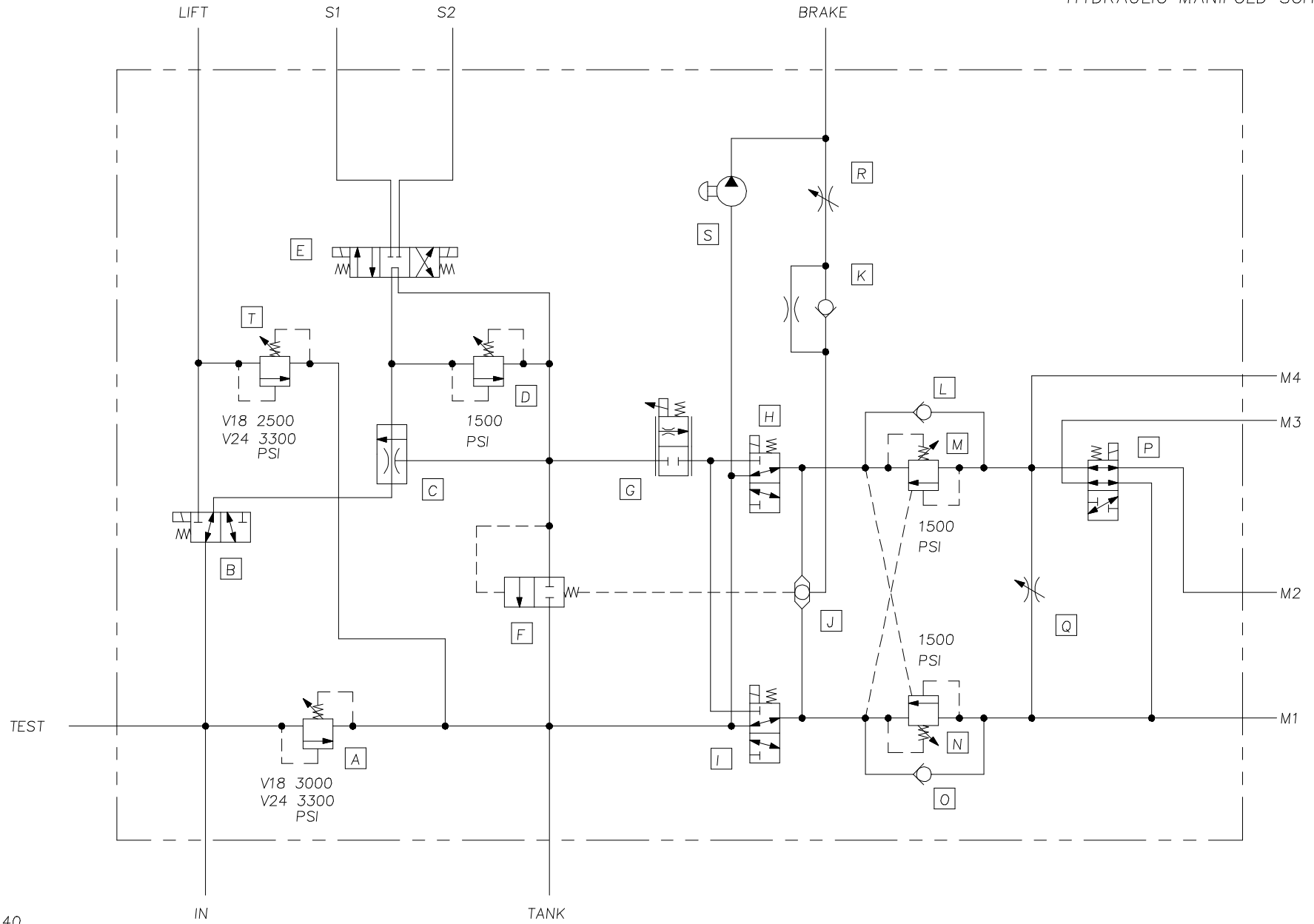
V1832 V1854 V2470 DC  
HYDRAULIC SCHEMATIC



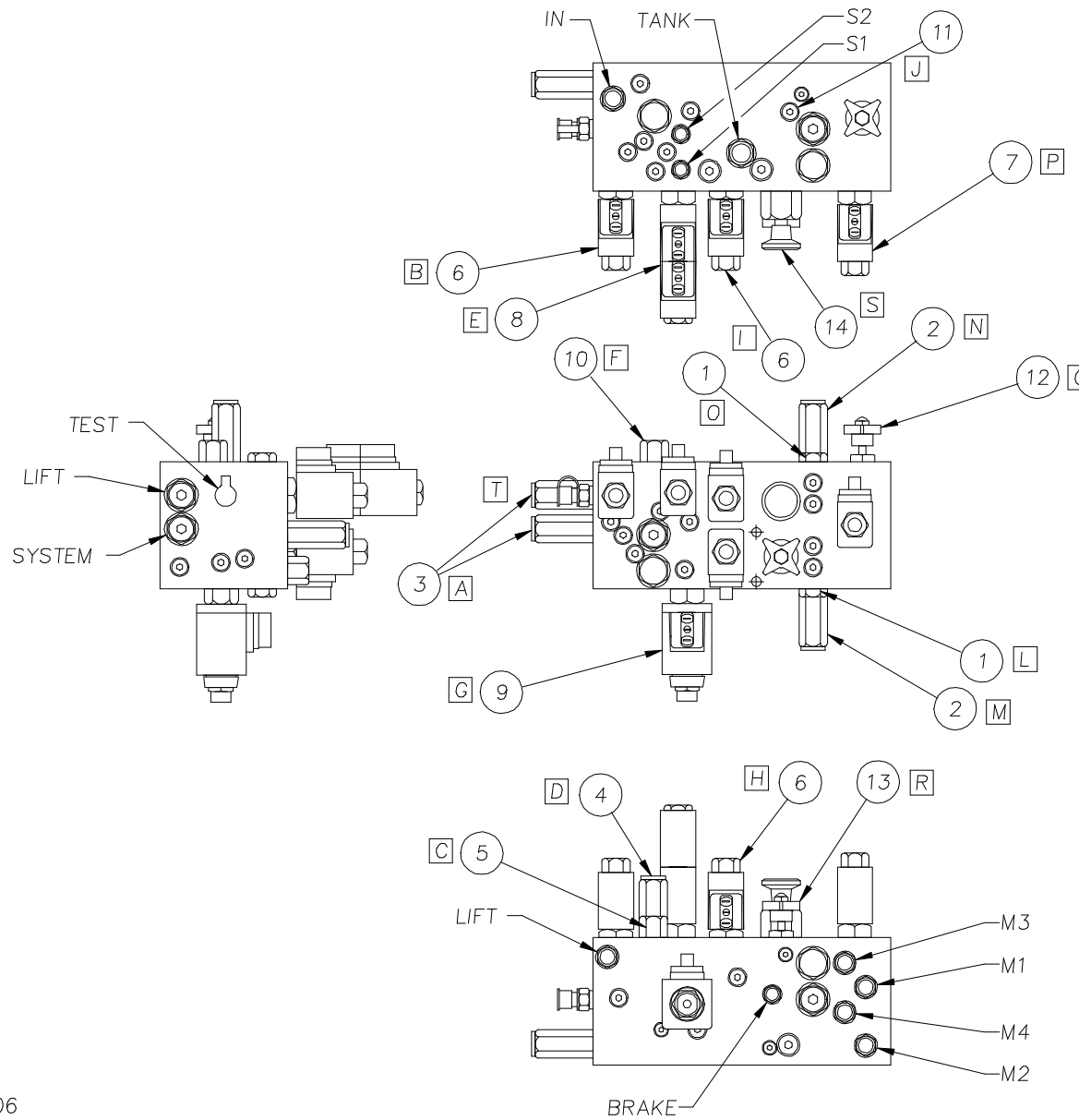
- NOTES:  
 1. SEE CHART FOR PROPER GPM.  
 2. \* LOWER FLOW CONTROL.  
 3. \*\* STEER FLOW CONTROL.  
 4. \*\*\* SYSTEM AND LIFT RELIEF VALVE PRESSURES.

CHART FOR BOTH UNITS	
<u>V-18</u>	LOWER VALVE 1.5 GPM STEERING VALVE .75 GPM SYSTEM RELIEF VALVE 3000 LIFT RELIEF VALVE 2500
<u>V-24</u>	LOWER VALVE 2.5 GPM STEERING VALVE 1.5 GPM SYSTEM RELIEF VALVE 3300 LIFT RELIEF VALVE 3300

V1832 V1854 V2470 DC  
HYDRAULIC MANIFOLD SCHEMATIC

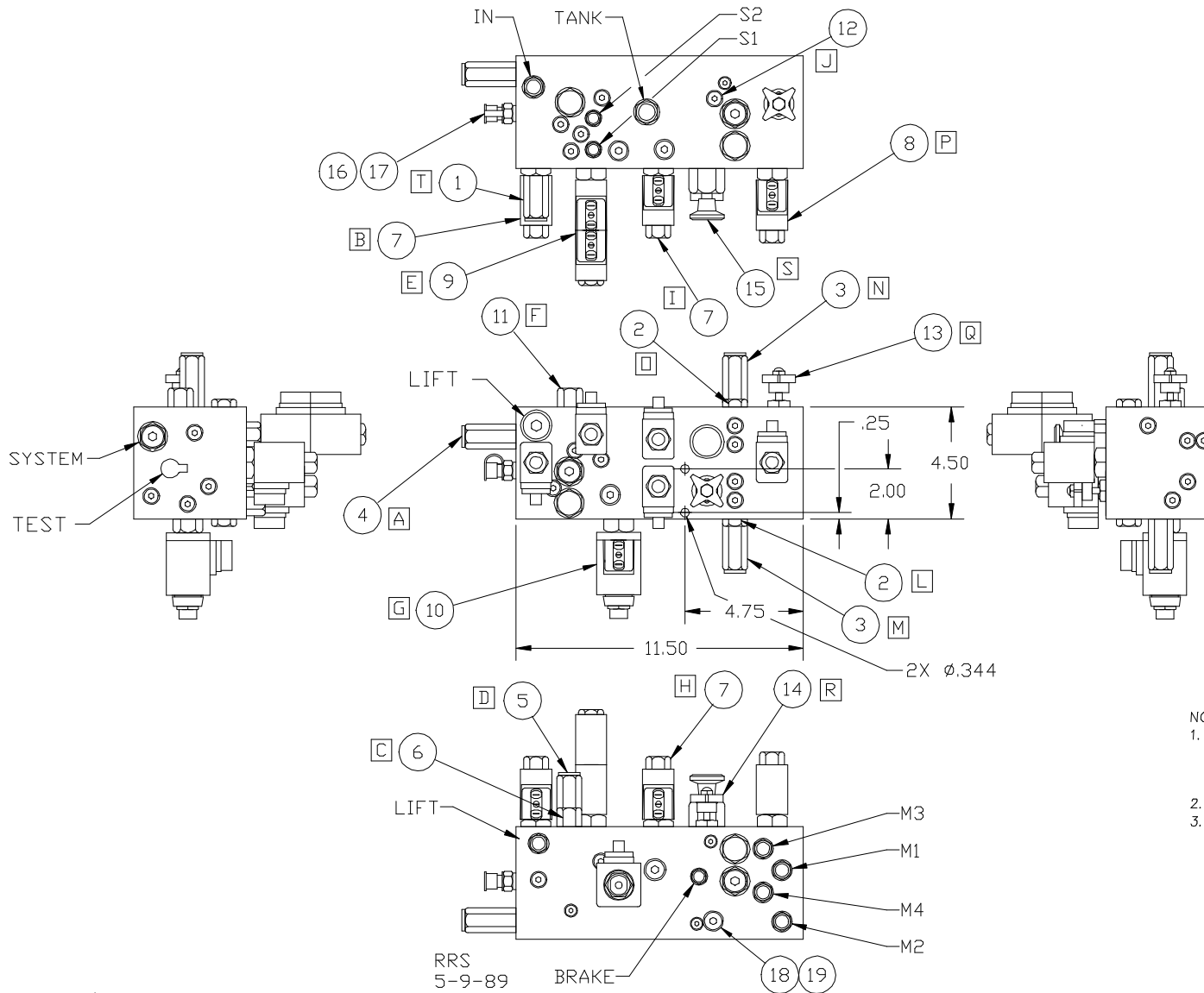


V1832 V1854 DC  
HYDRAULIC MANIFOLD LEGEND



ITEM	PART NO.	DESCRIPTION	QTY
1	45481	DRIVE CIRCUIT CHECK VALVE	2
2	18910	DRIVE CIRCUIT RELIEF VALVE	2
3	18911	DRIVE/LIFT CIRCUIT RELIEF VALVE	2
4	45485	STEER CIRCUIT RELIEF VALVE	1
5	18912	FLOW REGULATOR DRIVE & STEER CIRCUITS	1
6	18915	DRIVE CIRCUIT SOLENOID VALVE	3
7	18913	HI/LOW SPEED SOLENOID - 2 POS/4 WAY	1
8	18914	STEER CIRCUIT SOLENOID VALVE - 3 POS/4 WAY	1
9	18916	PROPORTIONAL VALVE DRIVE CIRCUIT	1
10	18917	DIFFERENTIAL SENSING VALVE DRIVE CIRCUIT	1
11	45483	SHUTTLE VALVE (BRAKE CIRCUIT)	1
12	18918	DRIVE MOTOR LOOP VALVE	1
13	18919	BRAKE ISOLATOR VALVE	1
14	19345	HAND PUMP (BRAKE RELEASE)	1

# V2470 DC HYDRAULIC MANIFOLD LEGEND



ITEM	PART NO.	DESCRIPTION	QTY.
1	18911	RELIEF VALVE/CP200-1-B-O-A-C-300	1
2	45481	CHECK VALVE/ CP100-1-B-O-005	2
3	18910	RELIEF VALVE/CP200-2-B-O-A-B-150	2
4	18911	RELIEF VALVE/CP200-1-B-O-A-C-300	1
5	45485	RELIEF VALVE/CP200-1-B-O-A-B-075	1
6	19206	FLOW REGULATOR/CP310-1L-B-O-1.5	1
7	19207	SOLENOID VALVE/CP521-2-B-O-20DS	3
8	18913	SOLENOID(2 POSITION 4 WAY)/CP631-16-B-O-200-S	1
9	18914	SOLENOID(3 POSITION 4 WAY)/CP530-3P-B-O-1-200-S	1
10	19208	PROPORTIONAL SOLENOID/CP551-30-P-O-10.0-240-S	1
11	18917	DIFFERENTIAL SENSING VALVE/CP700-1L-B-O-100	1
12	45483	SHUTTLE VALVE / 920067	1
13	18918	NEEDLE VALVE /CP610-1-B-O-B	1
14	18919	NEEDLE VALVE / CP618-1-B-O-B	1
15	920492	HAND PUMP	1
16	45642	DIAGNOSTIC NIPPLE - 320772	1
17	45643	DUST CAP - 320773	1
18	18920	SPRING - 520131	1
19	18921	ORIFICE - 620783	1

**NOTES:**

- O-RING PORT SIZES:  
 #4 - S1, S2, BRAKE & TEST  
 #6 - IN, LIFT, M1, M2, M3 & M4  
 #8 - TANK
- WEIGHT: 33.0 LBS
- ITEMS 1 THRU 18 ARE SERVICE PARTS ONLY. (PROCURED AS AN ASSEMBLY UNDER P/N 18186)