

A10 Super Hoist / PSL-Load Handler / PSL Advantage

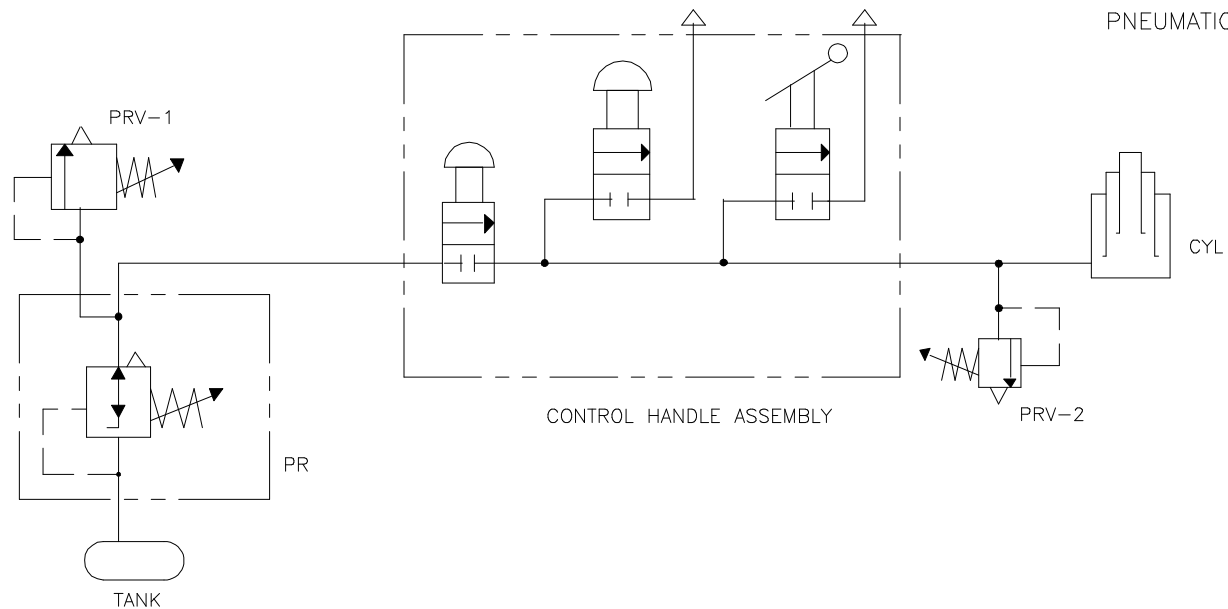
Page: Model:

Serial Number:

- A10-01A Super Hoist - Pneumatic Schematic
- A10-01B PSL/LH - AC Wiring Diagram Barnes Power Unit
- A10-02 PSL/LH - AC Wiring Diagram Fenner Power Unit
- A10-03 PSL/LH - AC Wiring Diagram Fenner Power Unit with Optional Mounted Switch
- A10-04 PSL/LH - DC Wiring Diagram
- A10-05/6 PSL/LH - Old Hydraulic Schematic Reference To A1-13 & A1-14
- A10-07 PSLA - AC Wiring Diagram
- A10-08 PSLA - AC Wiring Diagram with E-Stop
- A10-09 PSLA - AC Wiring Diagram with E-Stop & Pendant Control No Longer Grounded
- A10-10 PSLA - DC Wiring Diagram
- A10-11 PSLA - DC Wiring Diagram with E-Stop
- A10-12 PSLA - DC Wiring Diagram with E-Stop & Pendant Control No Longer Grounded
- A10-13 PSLA - DC Wiring Diagram with E-Stop & 175 AMP Fuse
- A10-14 PSLA - Hydraulic Schematic

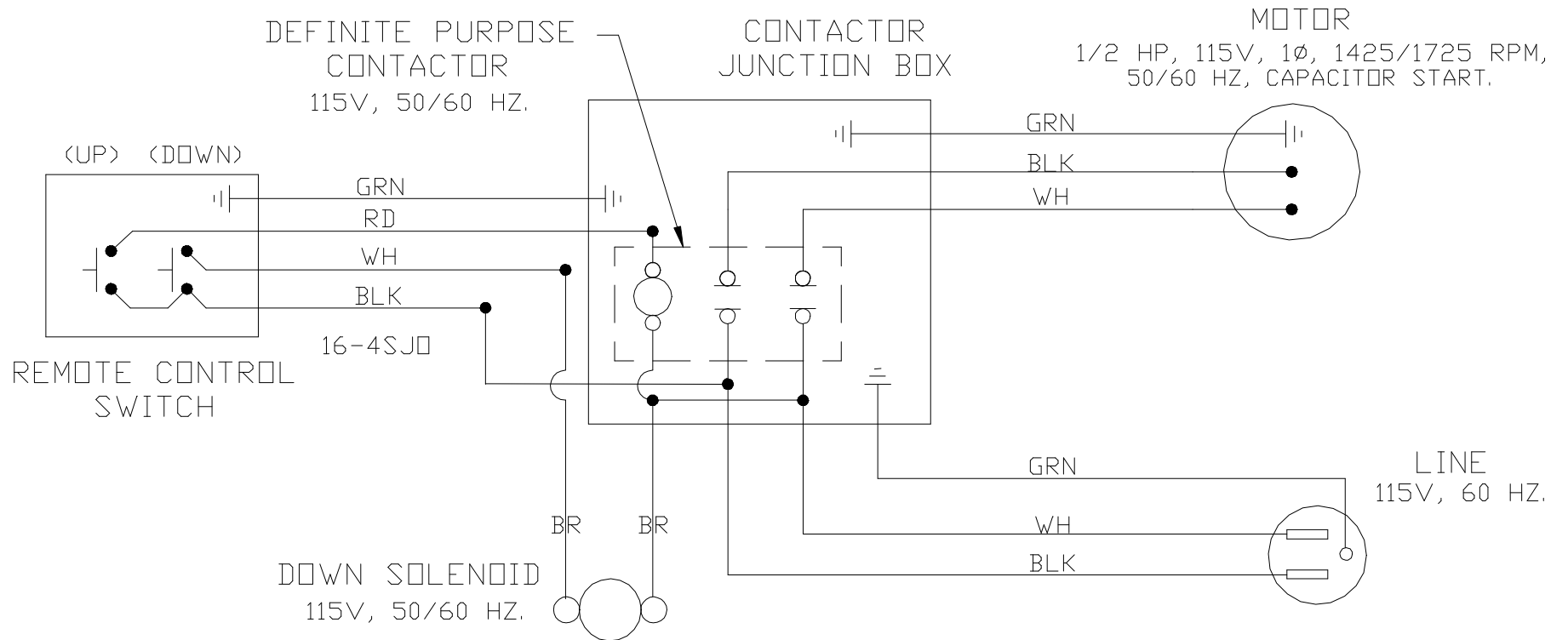


SUPER HOIST
PNEUMATIC SCHEMATIC



- TANK CARBON DIOXIDE TANK
- PR PRESSURE REGULATOR – PRESET AT 125 PSI
- PRV-1 PRESSURE RELIEF VALVE – PRESET AT 160 PSI
- PRV-2 PRESSURE RELIEF VALVE – PRESET AT 87 PSI (B)
- CYL TELESCOPIC CYLINDER

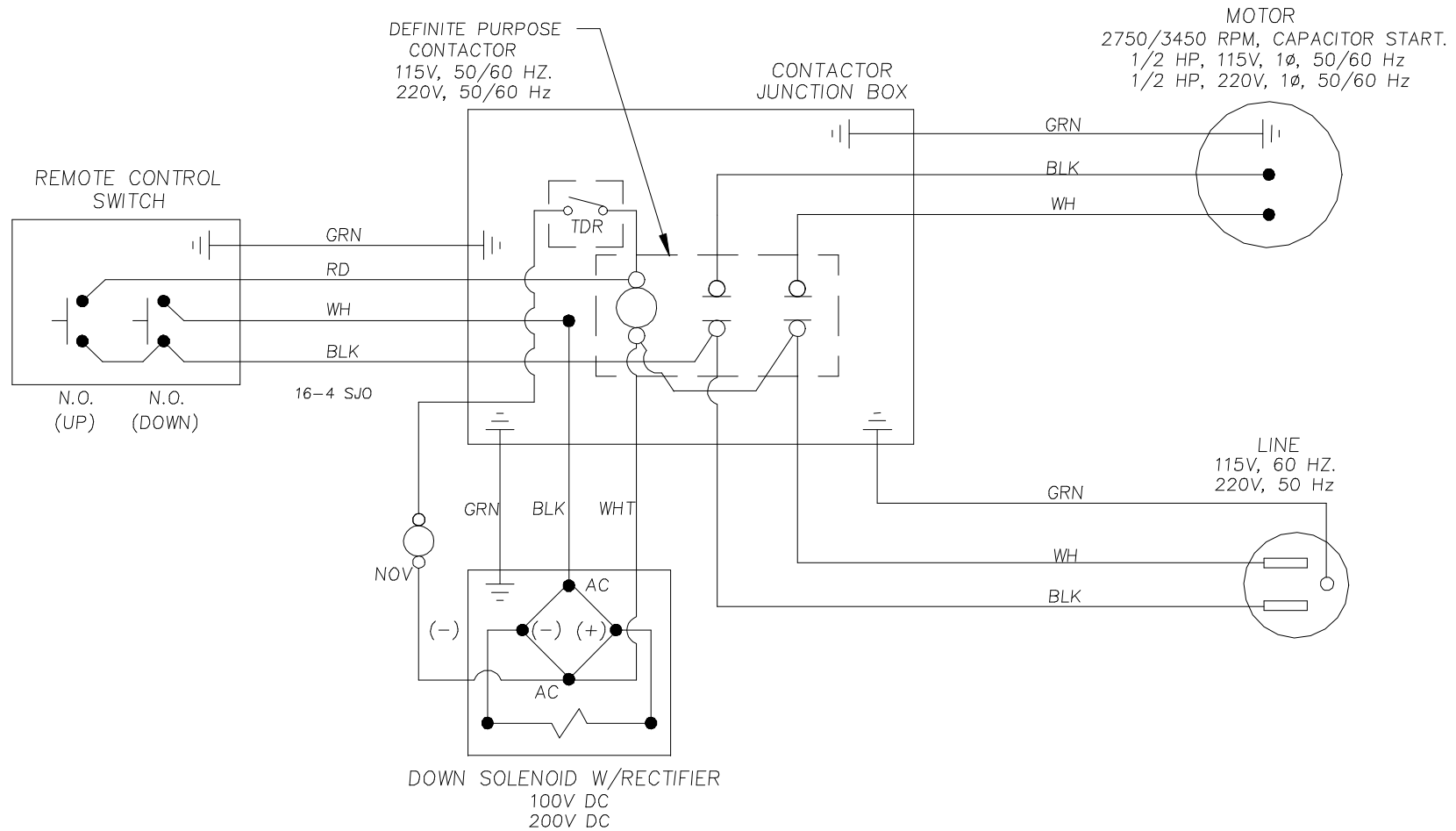
PSL/LOAD HANDLER
AC WIRING DIAG
BARNES POWER UNIT



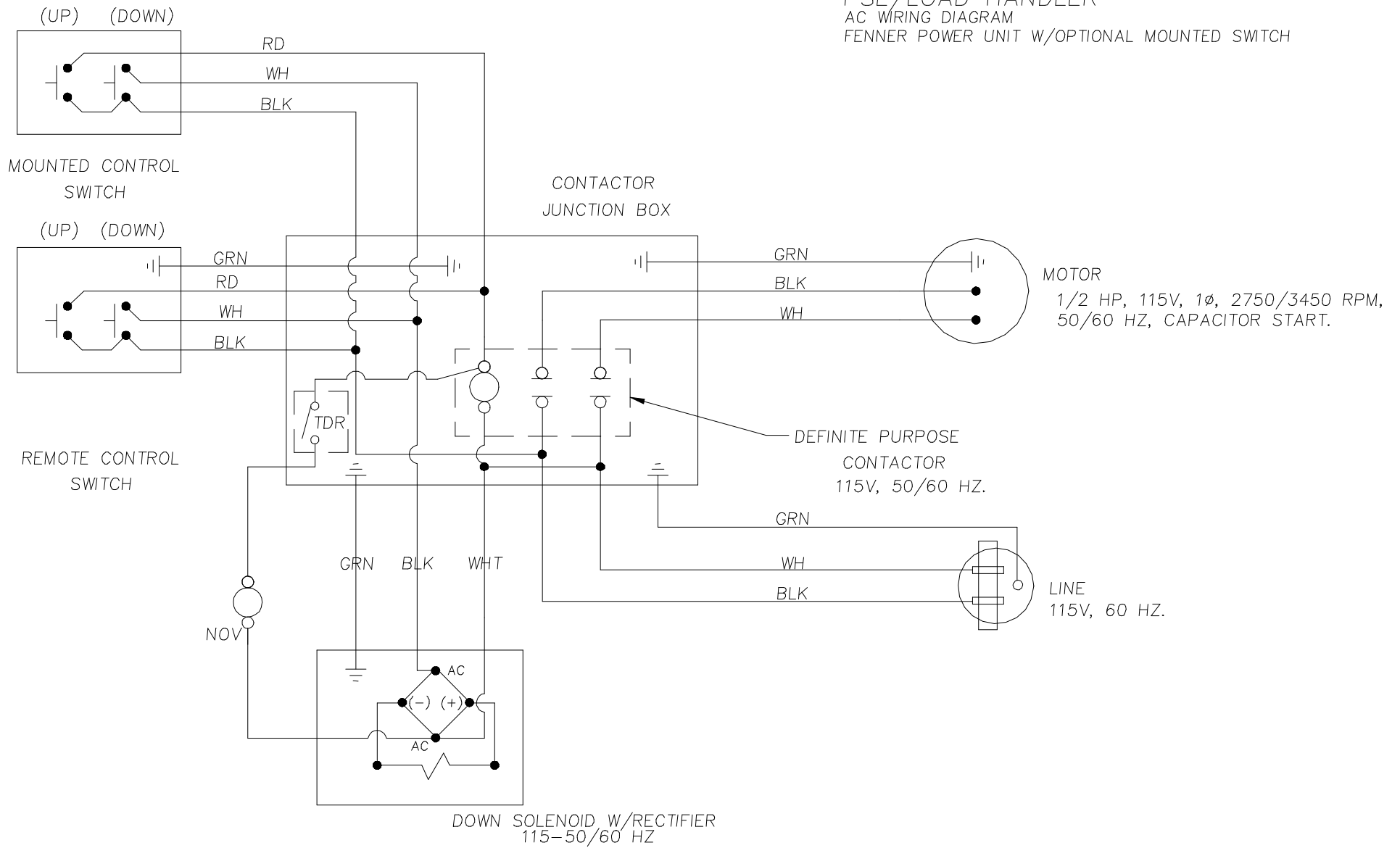
PSL/LOAD HANDLER
 AC WIRING DIAGRAM
 FENNER POWER UNIT

: FOR 115V, 50/60 Hz APPLICATIONS.

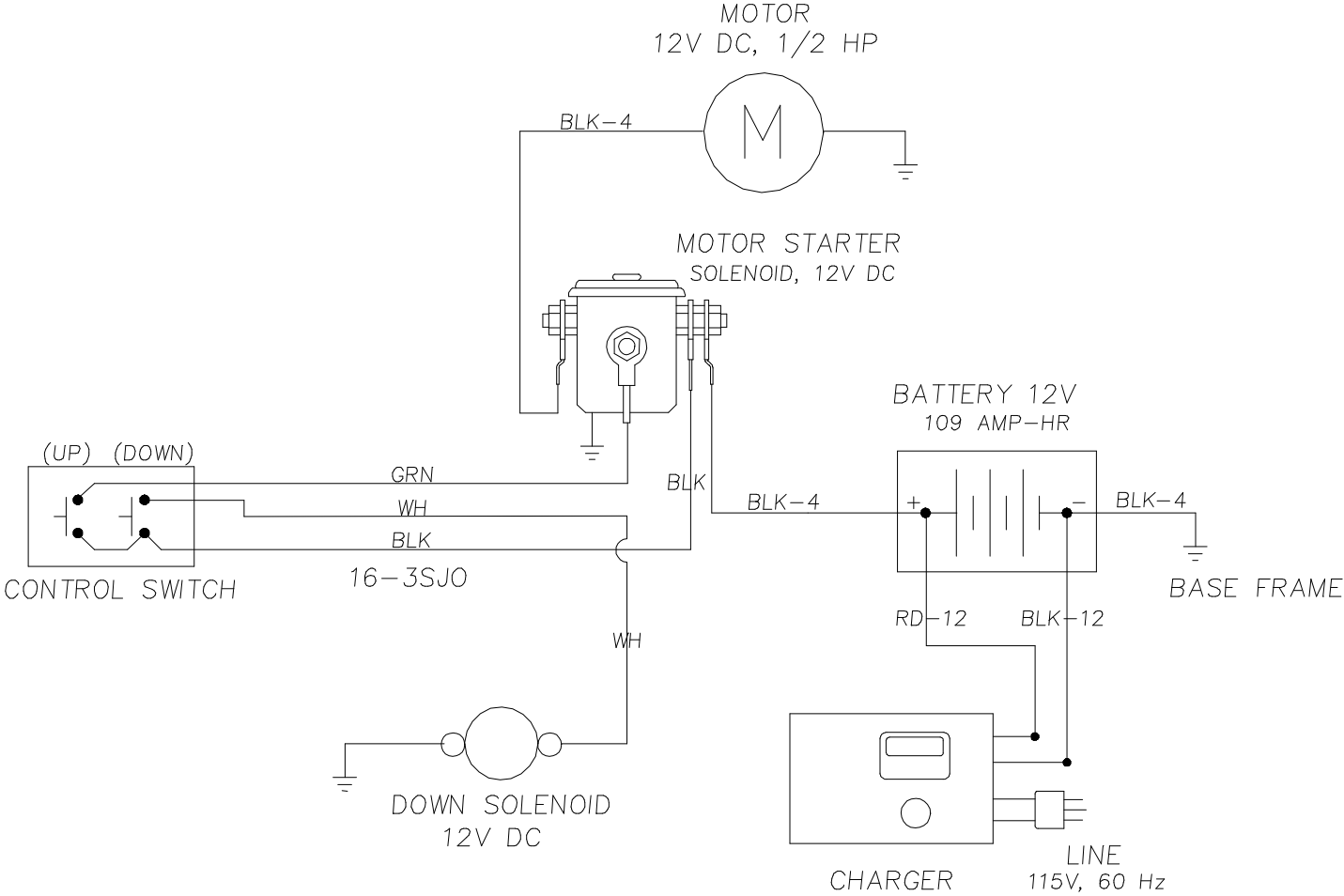
: FOR 220V, 50/60 Hz APPLICATIONS.



PSL/LOAD HANDLER
 AC WIRING DIAGRAM
 FENNER POWER UNIT W/OPTIONAL MOUNTED SWITCH



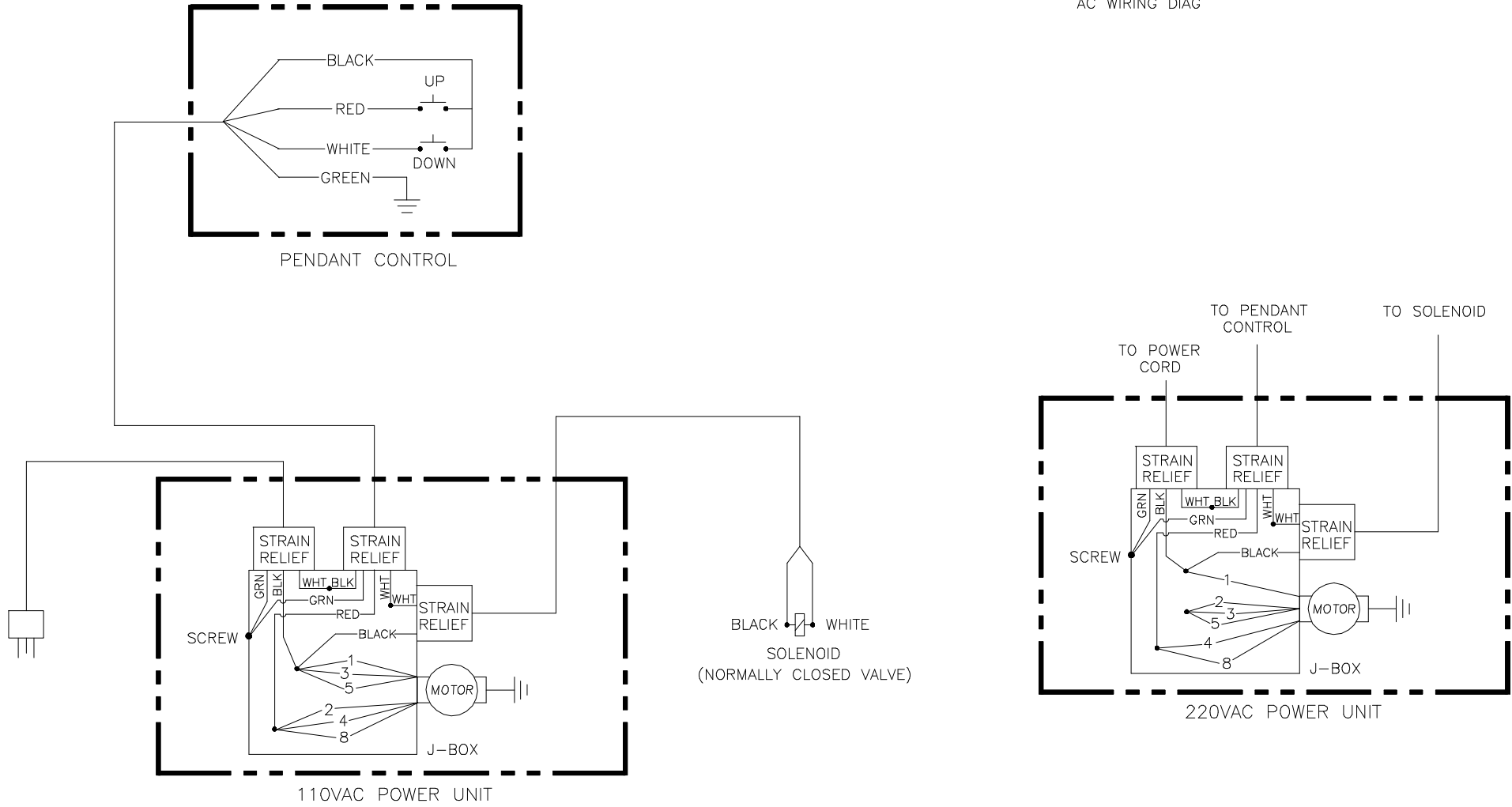
PSL/LOAD HANDLER DC WIRING DIAGRAM

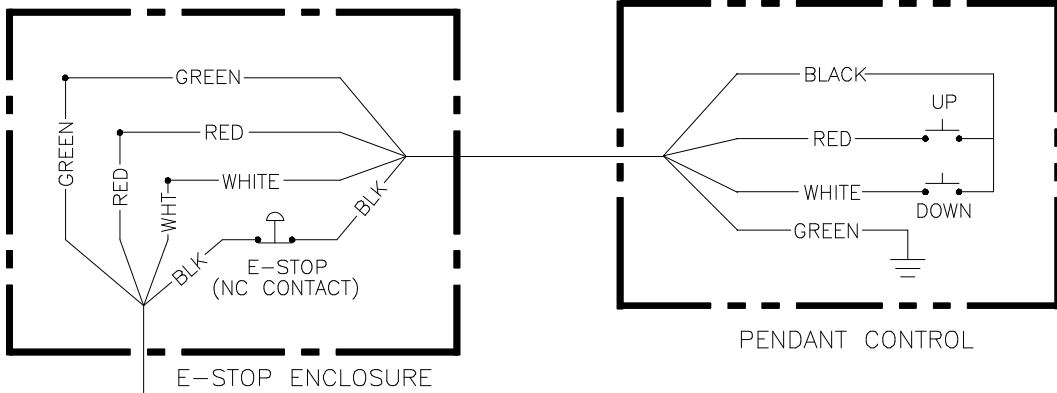


FOR 10-5 PSL/LH OLD HYDRAULIC SCHEM
SEE A1-13

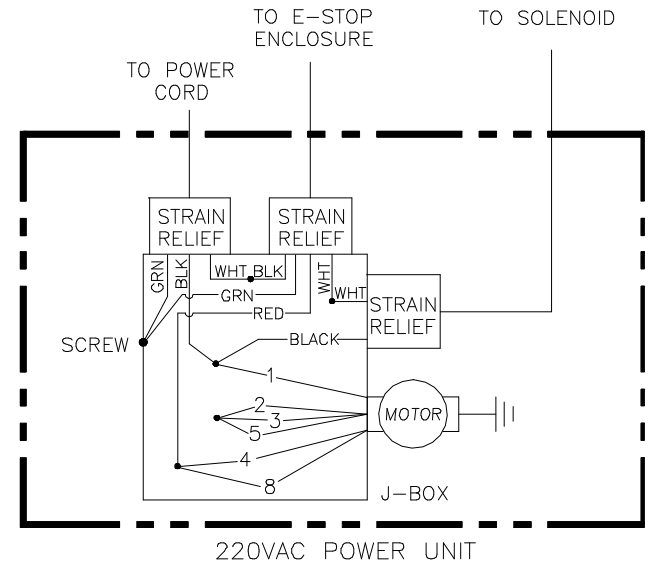
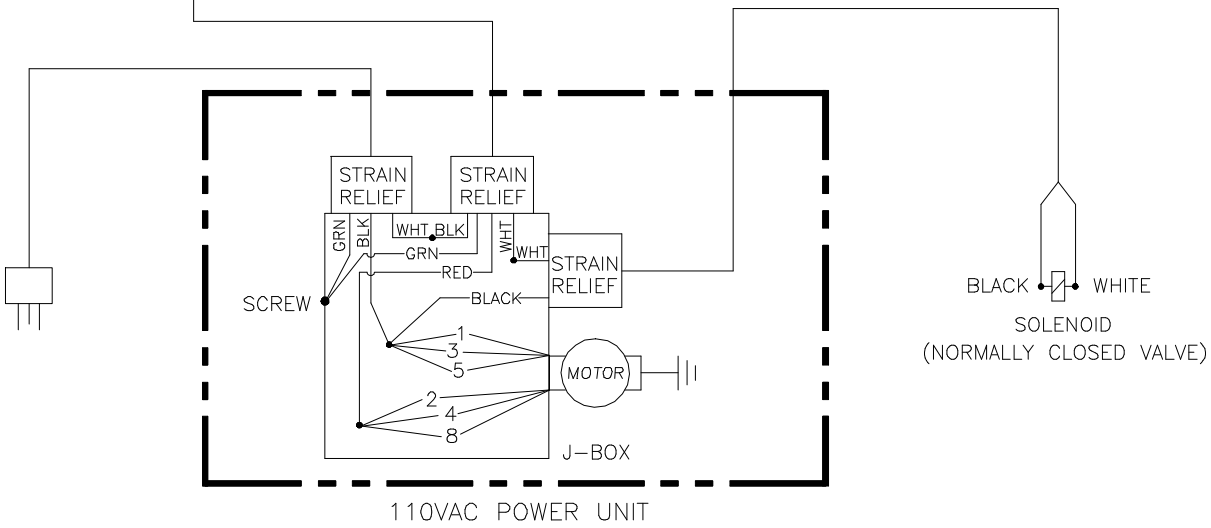
FOR 10-6 PSL/LH OLD HYDRAULIC SCHEM
WITH NORMALLY OPEN VALVE
SEE A1-14

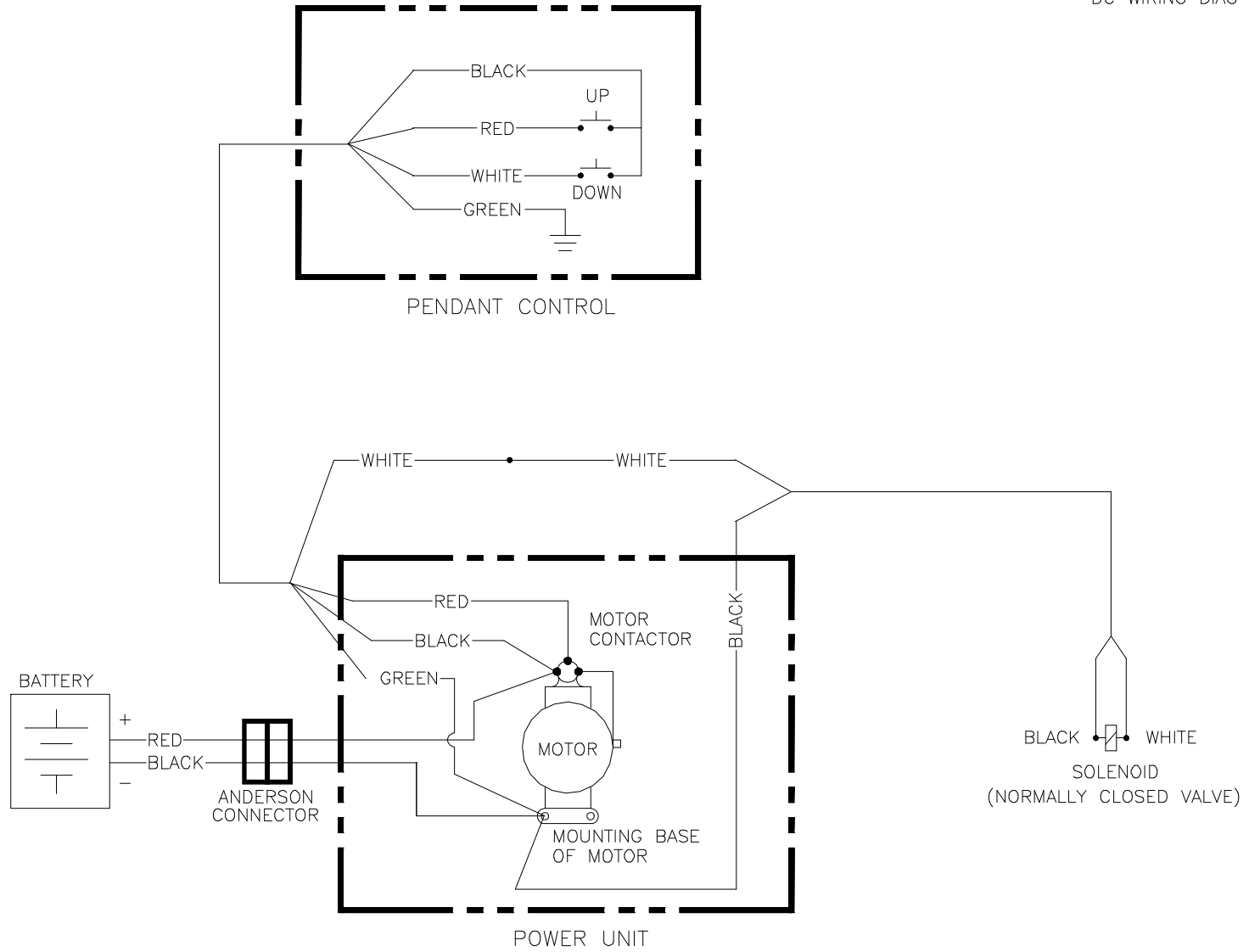
PSLA
AC WIRING DIAG



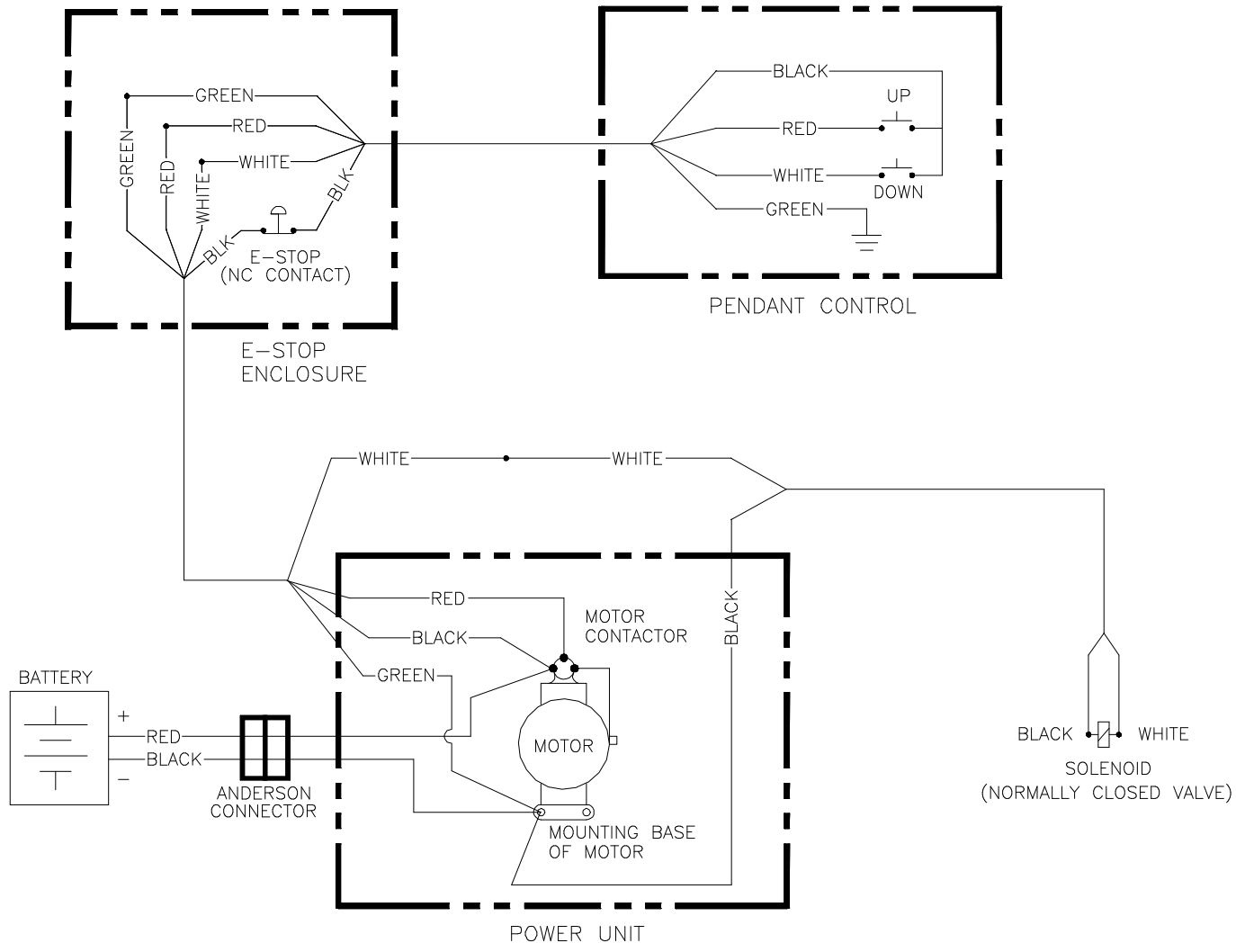


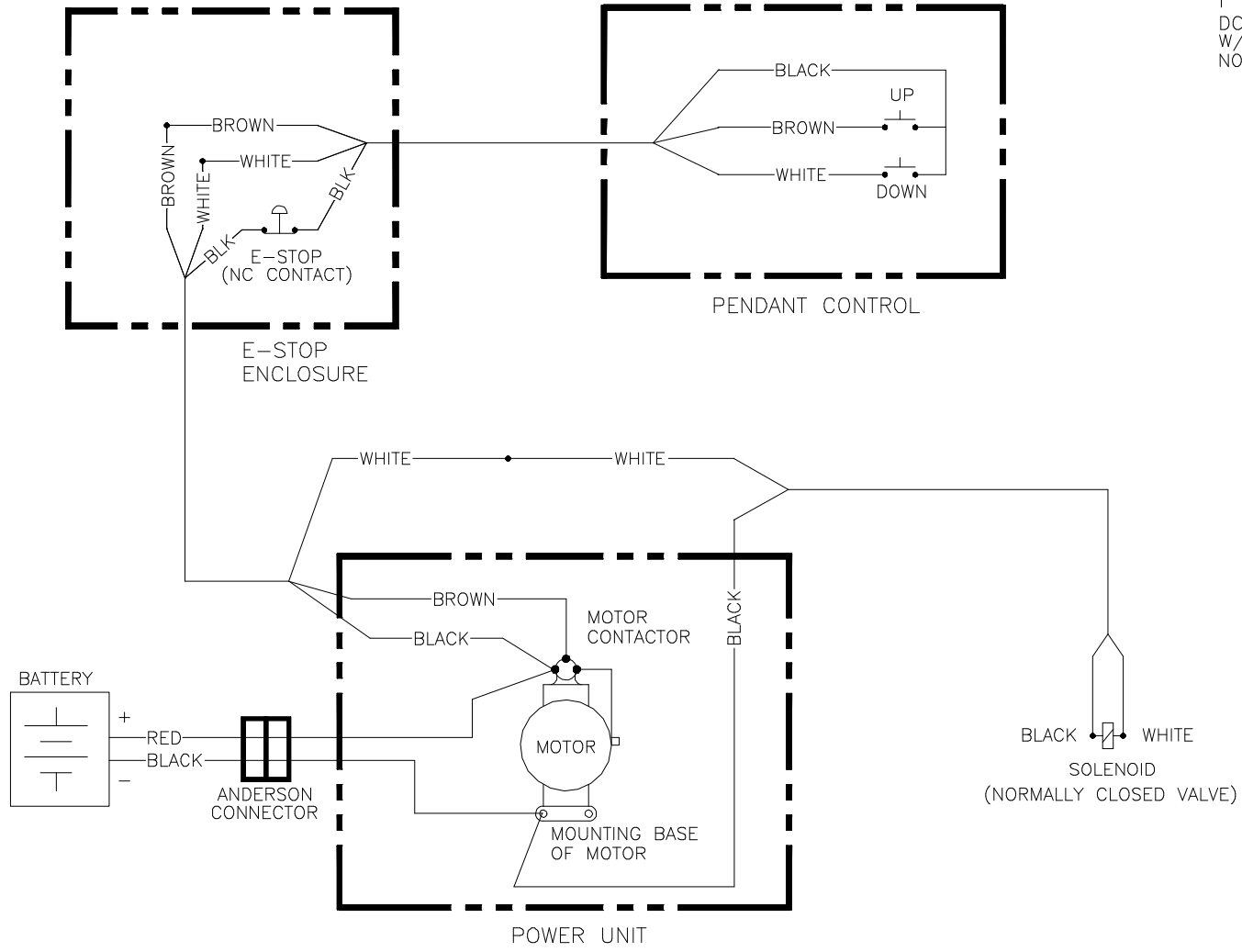
PSLA
AC WIRING DIAG
W/ E-STOP





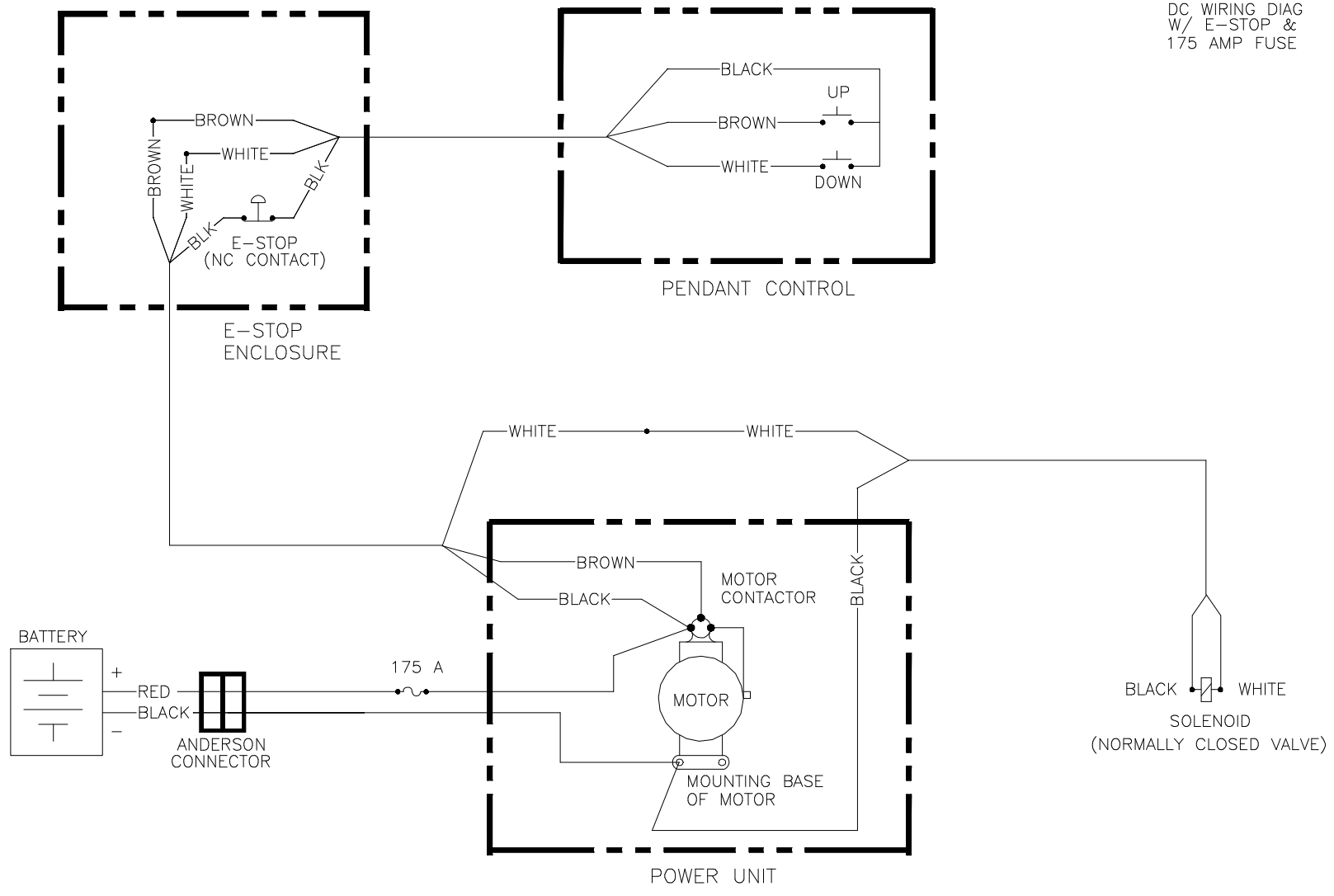
PSLA
DC WIRING DIAG
W/ E-STOP



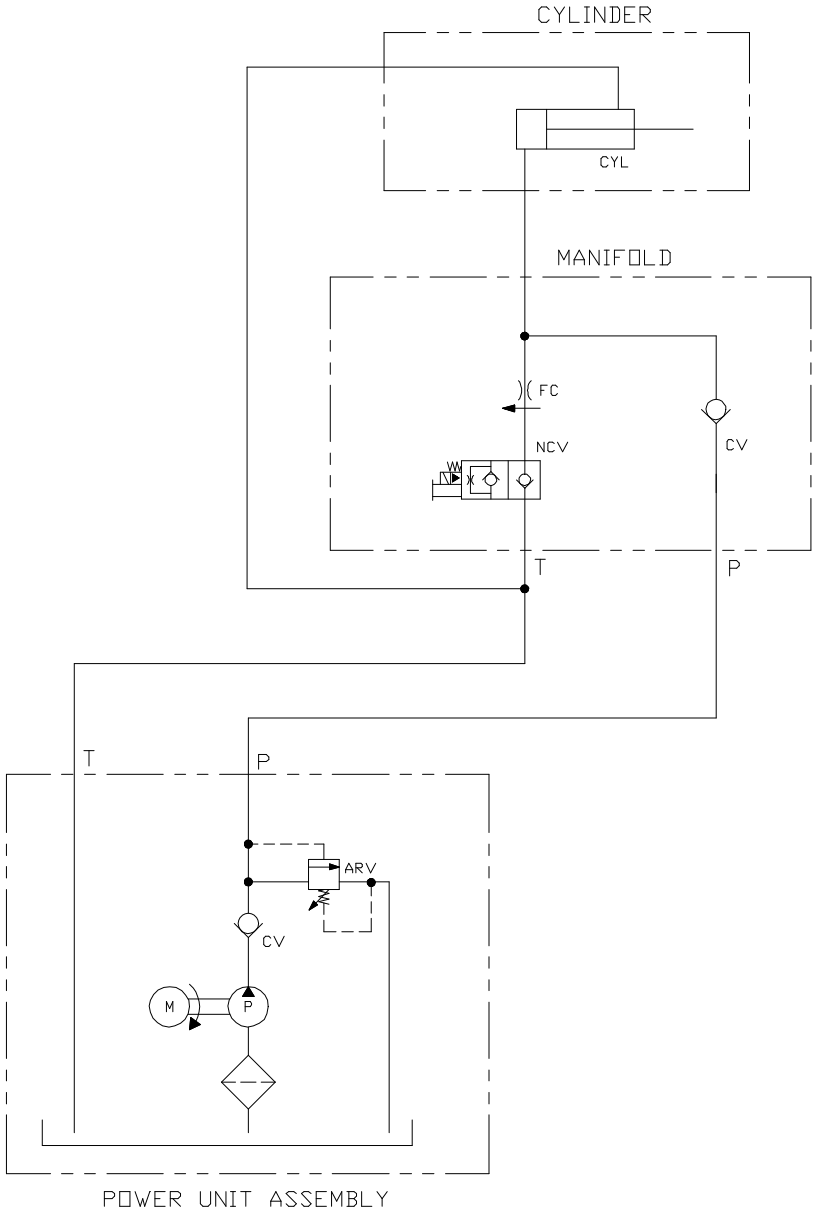


PSLA
 DC WIRING DIAG
 W/ E-STOP & PENDANT CONTROL
 NO LONGER GROUNDED

PSLA
 DC WIRING DIAG
 W/ E-STOP &
 175 AMP FUSE

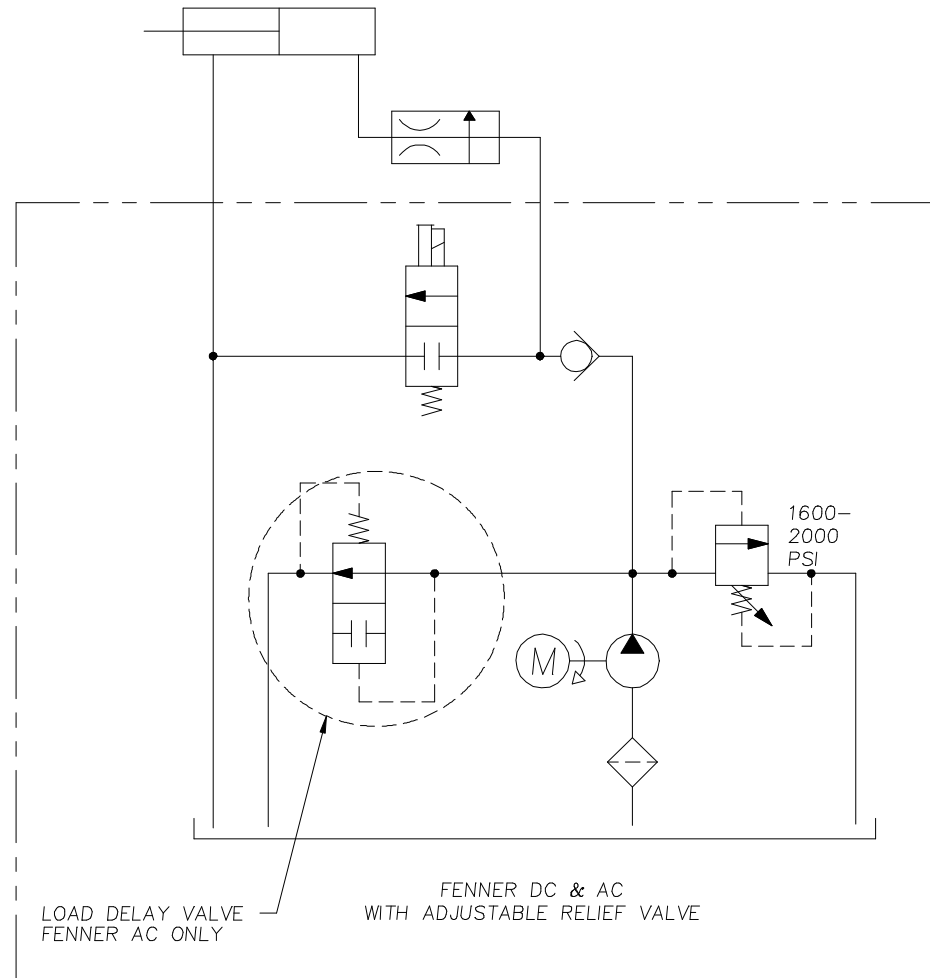
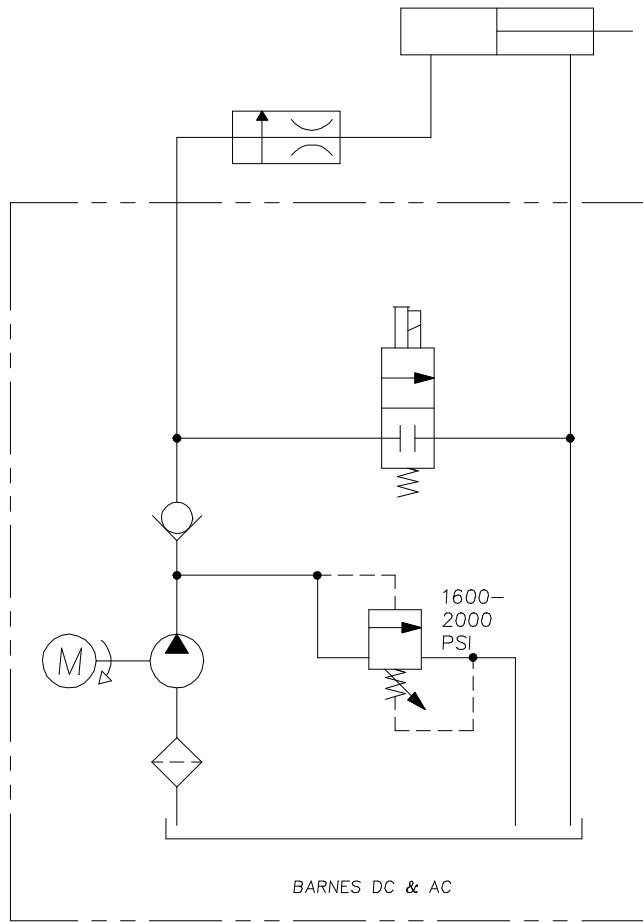


PSLA
HYDRAULIC SCHEM



- ARV ADJUSTABLE RELIEF VALVE
- CV CHECK VALVE
- CYL CYLINDER DOUBLE ACTING
- FC FLOW CONTROL PRESSURE COMPENSATING
- M MOTOR
- NCV NORMALLY CLOSED VALVE
- W/MANUAL OVERRIDE (10 VOLT DC, 110 VAC, OR 220 VAC)
- P PUMP

PLC/PLI/EUP
HYDRAULIC SCHEMATIC



AWP PLI92 PLC92
HYDRAULIC SCHEMATIC
FENNER POWER UNIT (AC&DC)

