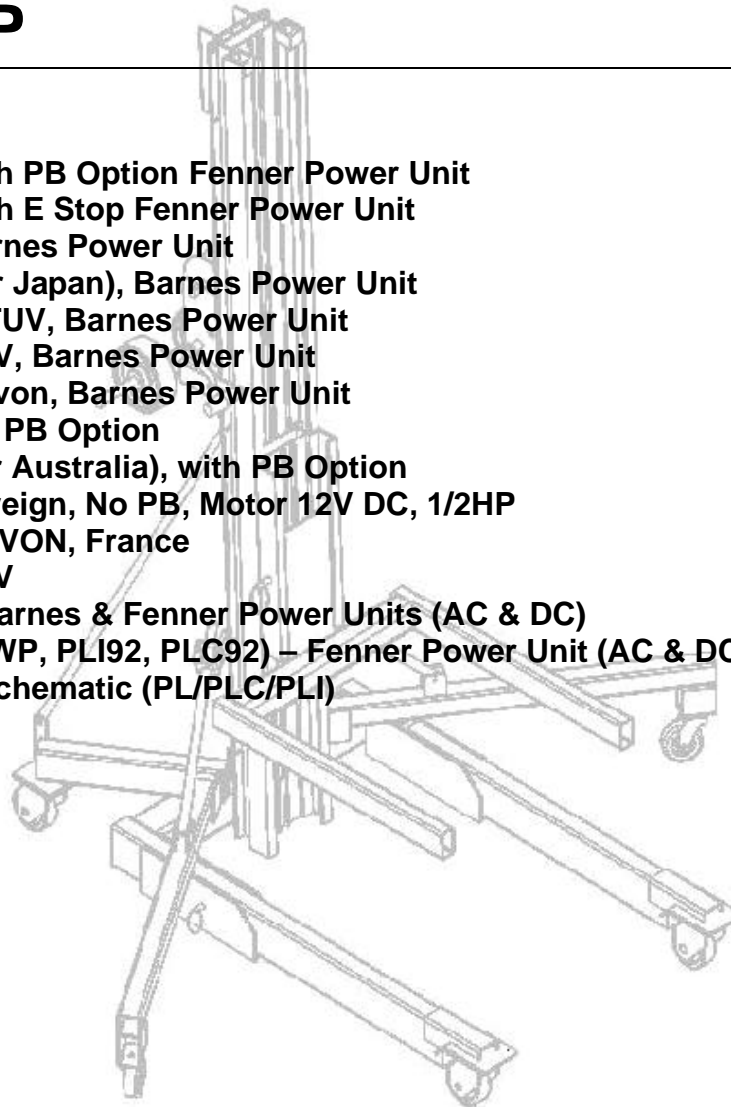


A1 PLC/PLI/EUP

Page: Model:

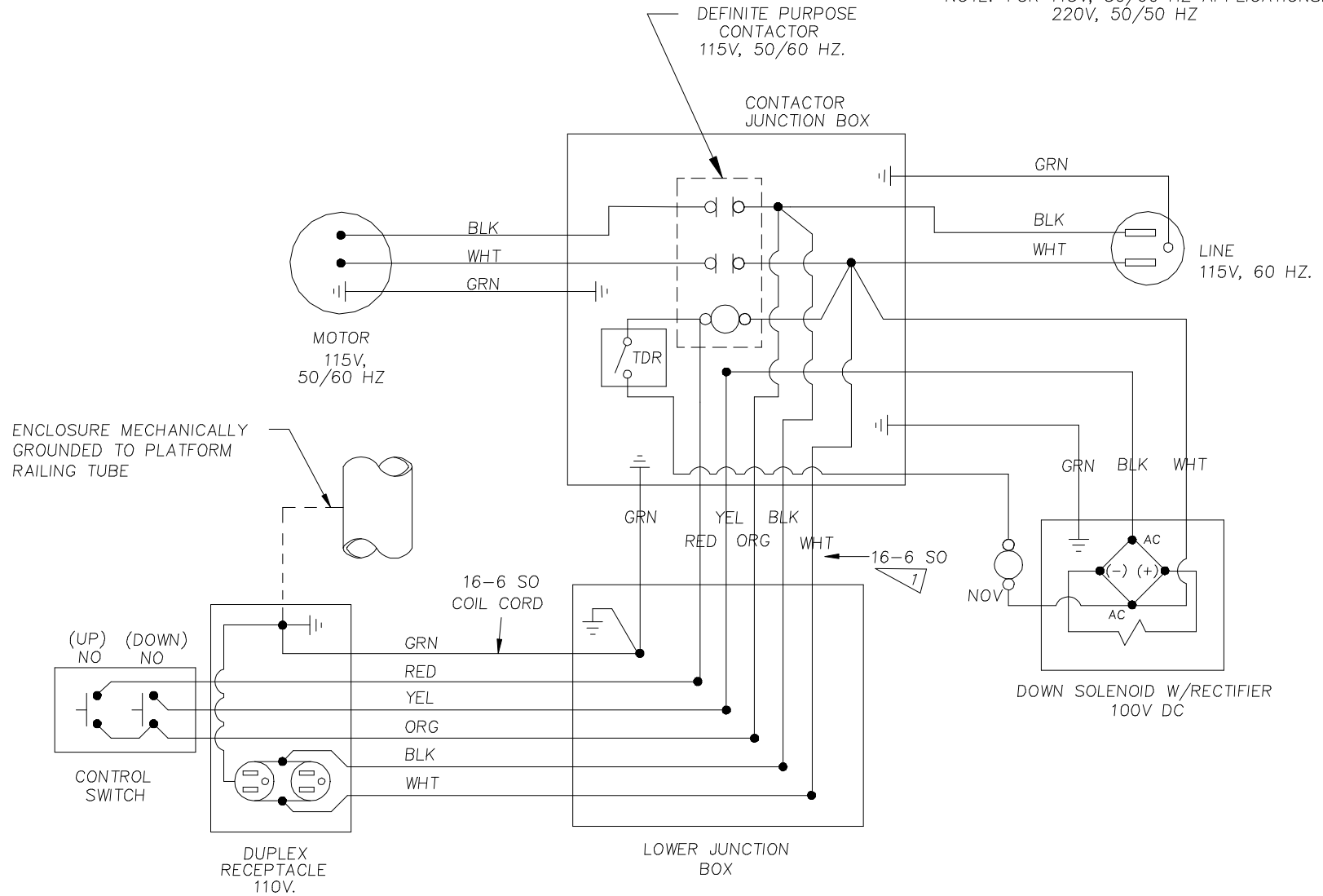
Serial Number:

- A1-01 AC Wiring Diagram - with PB Option Fenner Power Unit
- A1-02 AC Wiring Diagram - with E Stop Fenner Power Unit
- A1-03 AC Wiring Diagram - Barnes Power Unit
- A1-04 AC Wiring Diagram - (for Japan), Barnes Power Unit
- A1-05 AC Wiring Schematic - TUV, Barnes Power Unit
- A1-06 AC Wiring Diagram - TUV, Barnes Power Unit
- A1-07 AC Wiring Diagram - Novon, Barnes Power Unit
- A1-08 DC Wiring Diagram with PB Option
- A1-09 DC Wiring Diagram - (for Australia), with PB Option
- A1-10 DC Wiring Diagram - Foreign, No PB, Motor 12V DC, 1/2HP
- A1-11 DC Wiring Diagram - NOVON, France
- A1-12 DC Wiring Diagram - TUV
- A1-13 Hydraulic Schematic - Barnes & Fenner Power Units (AC & DC)
- A1-14 Hydraulic Schematic (AWP, PLI92, PLC92) – Fenner Power Unit (AC & DC)
- A1-15 Pneumatic / Hydraulic Schematic (PL/PLC/PLI)



PLC/PLI/EUP
 AC WIRING DIAGRAM, W/PB OPT.
 FENNER POWER UNIT

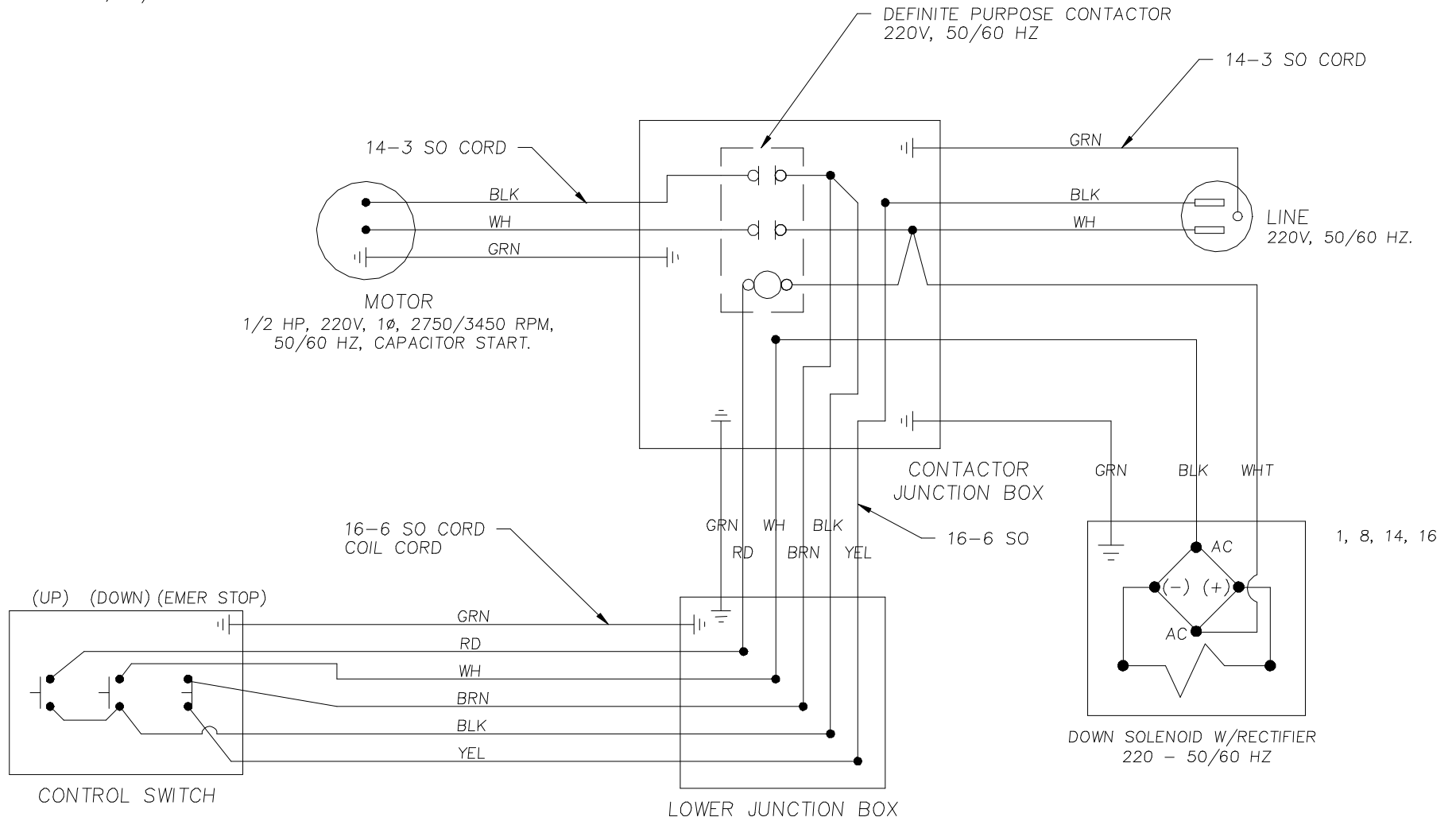
NOTE: FOR 115V, 50/60 HZ APPLICATIONS.
 220V, 50/50 HZ



1 ORANGE WIRE MAY APPEAR BROWN
 YELLOW WIRE MAY BE BLUE IN SOME BRANDS OF CORD

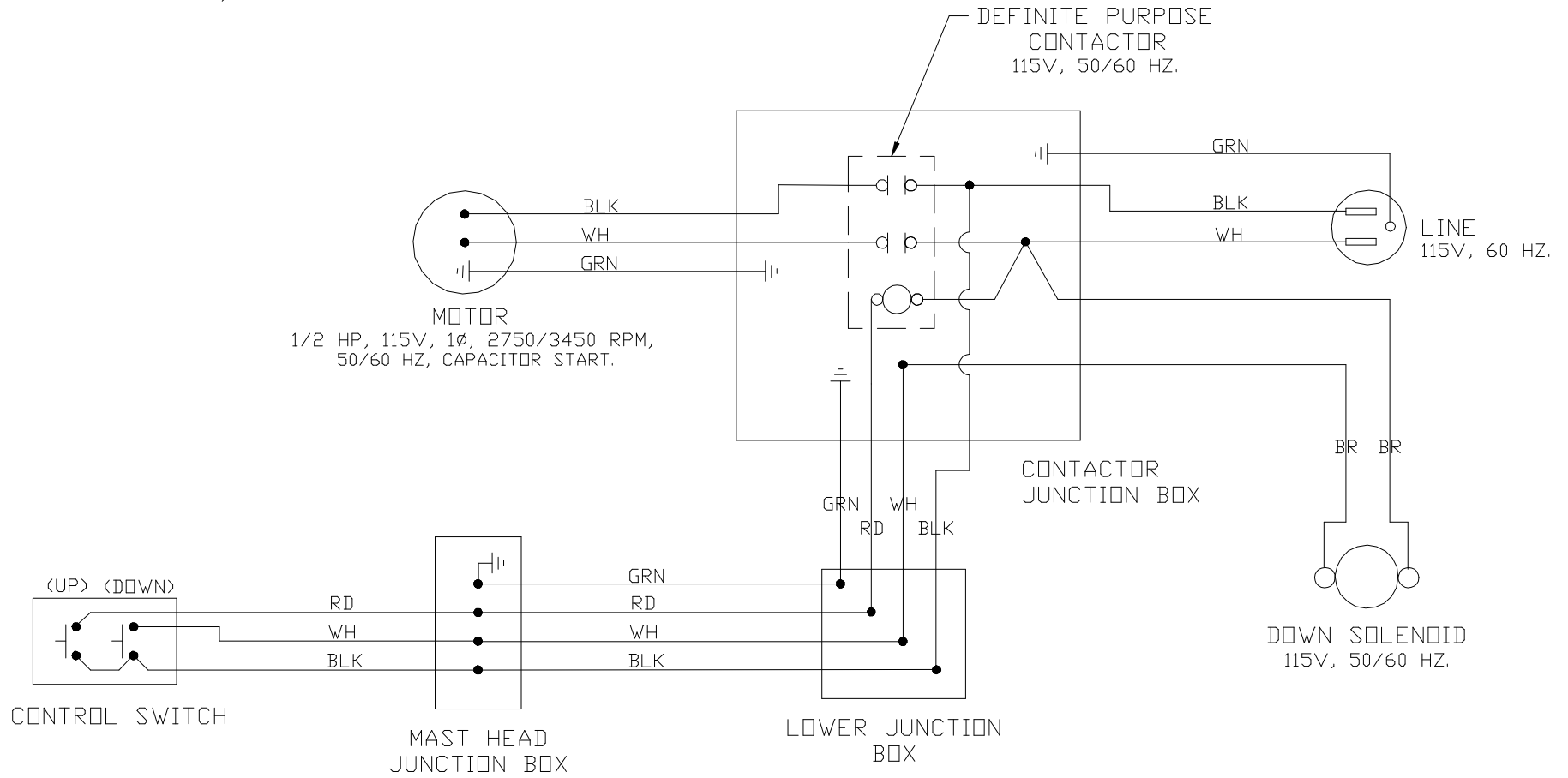
PLC/PLI/EUP
 AC WIRING DIAGRAM, W/E.STOP
 FENNER POWER UNIT

NOTE:
 FOR 220V, 50/60 HZ APPLICATIONS.



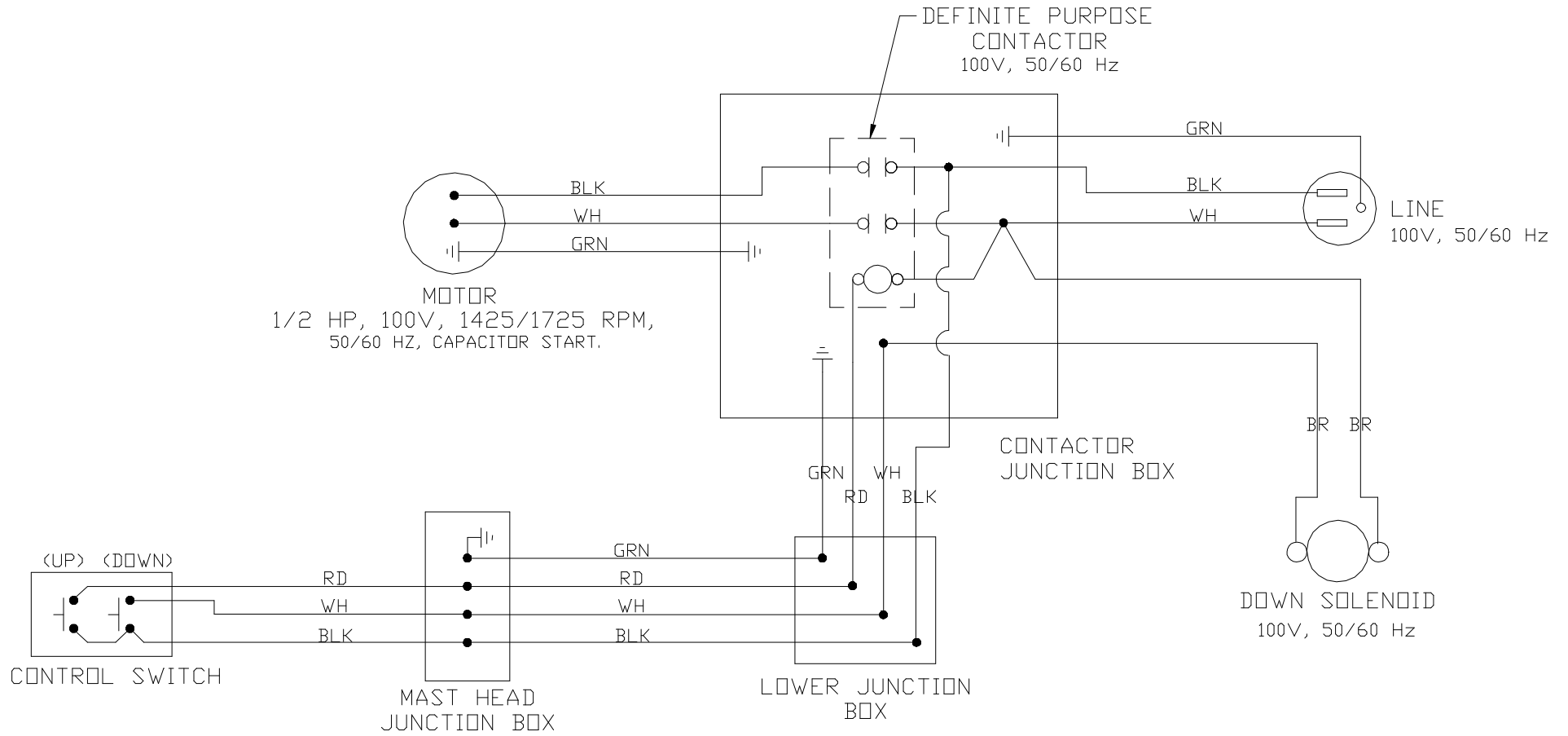
PLC / PLI / EUP
 AC WIRING DIAG
 BARNES POWER UNIT

NOTE: FOR 115V, 50/60 HZ APPLICATIONS
 220V, 50/60 HZ APPLICATIONS



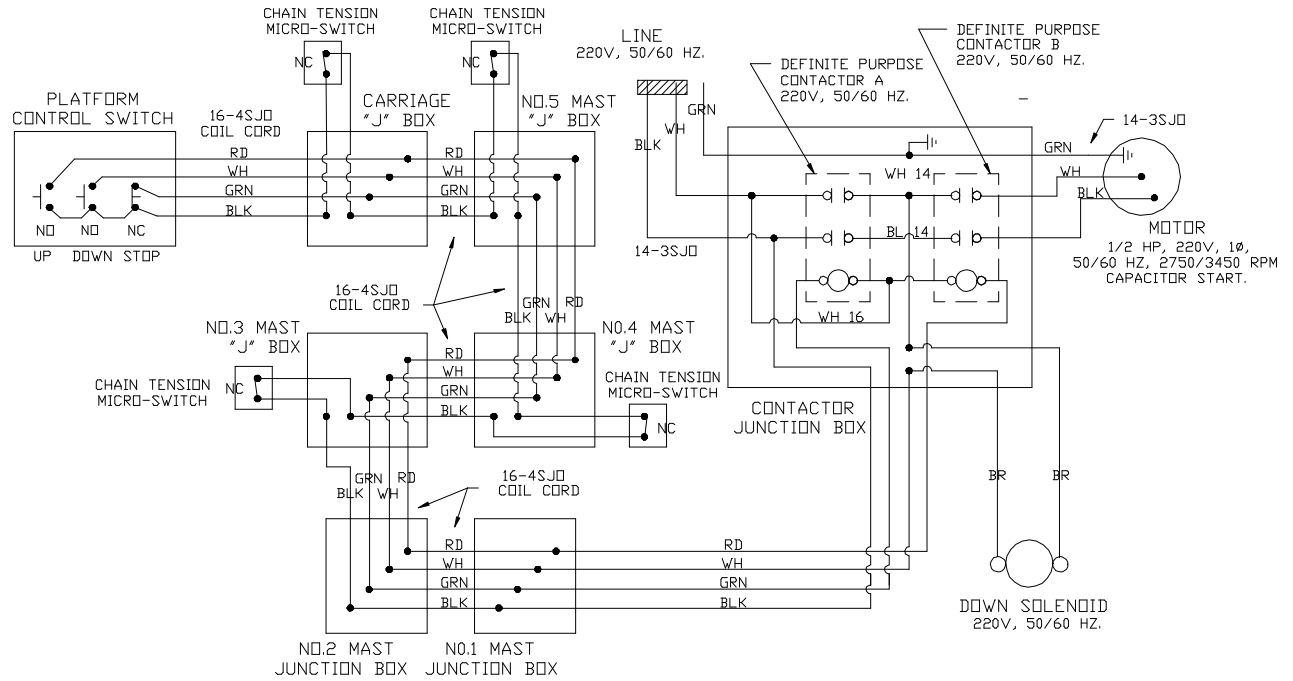
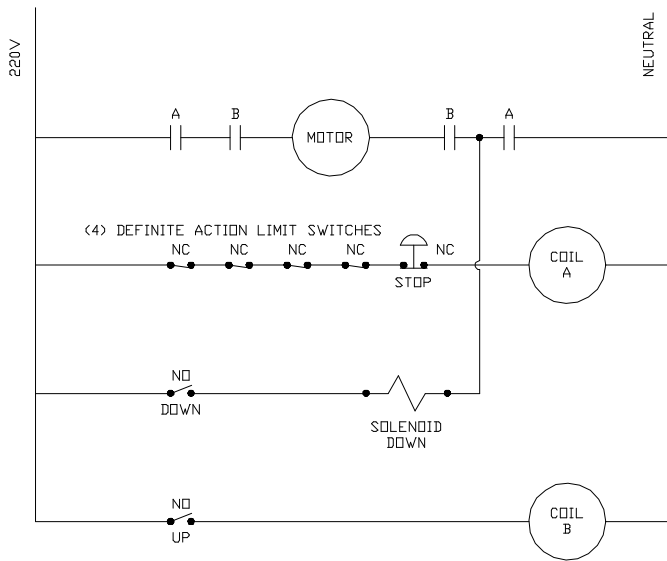
NOTE: FOR 100V, 50/60 HZ APPLICATIONS

PLC / PLI / EUP
AC WIRING DIAGRAM (FOR JAPAN)
BARNES POWER UNIT



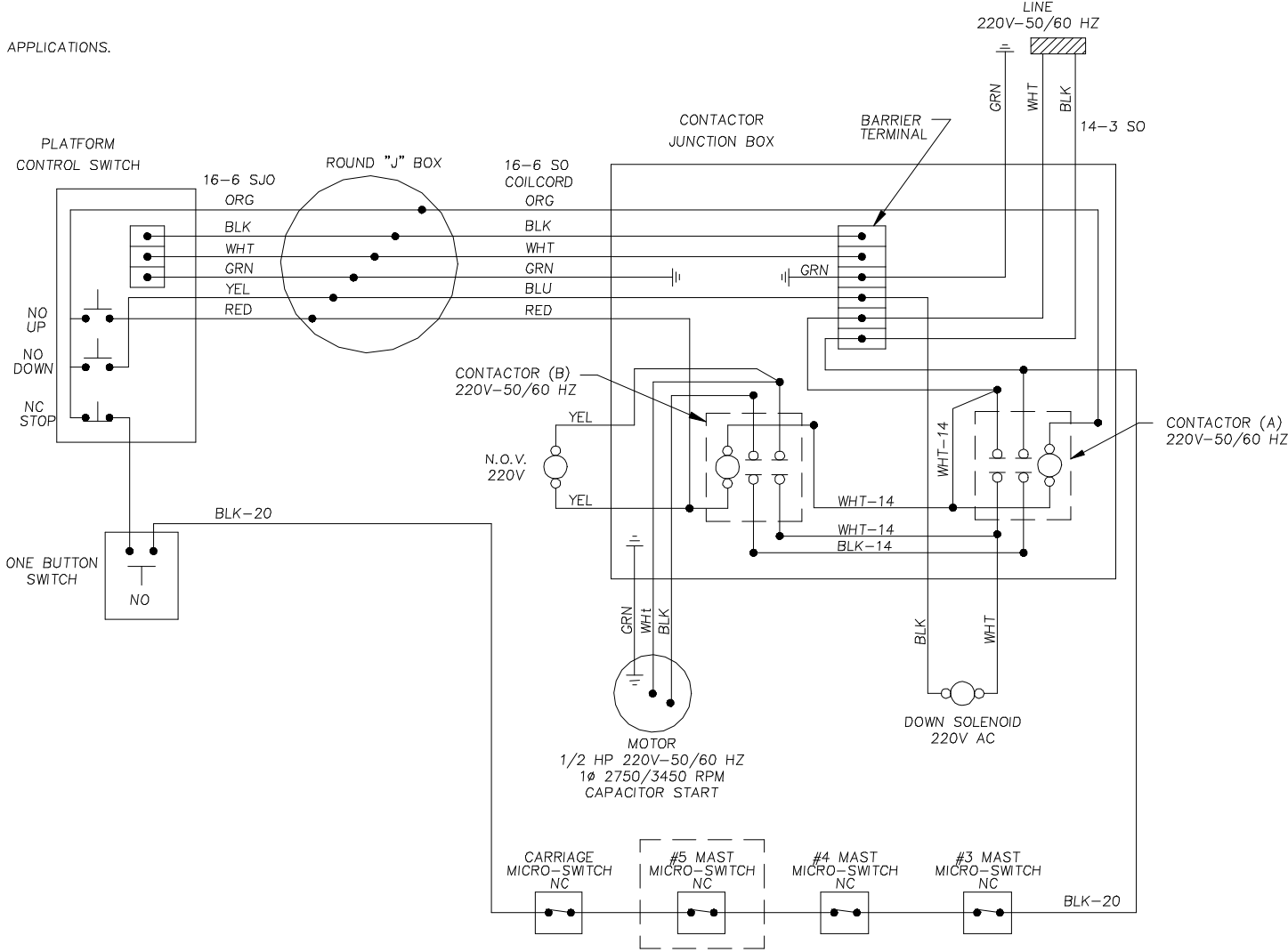
PLC/ PLI/ EUP
 AC WIRING SCHEM - TUV
 BARNES POWER UNIT

NOTE: 220V, 50 HZ APPLICATIONS

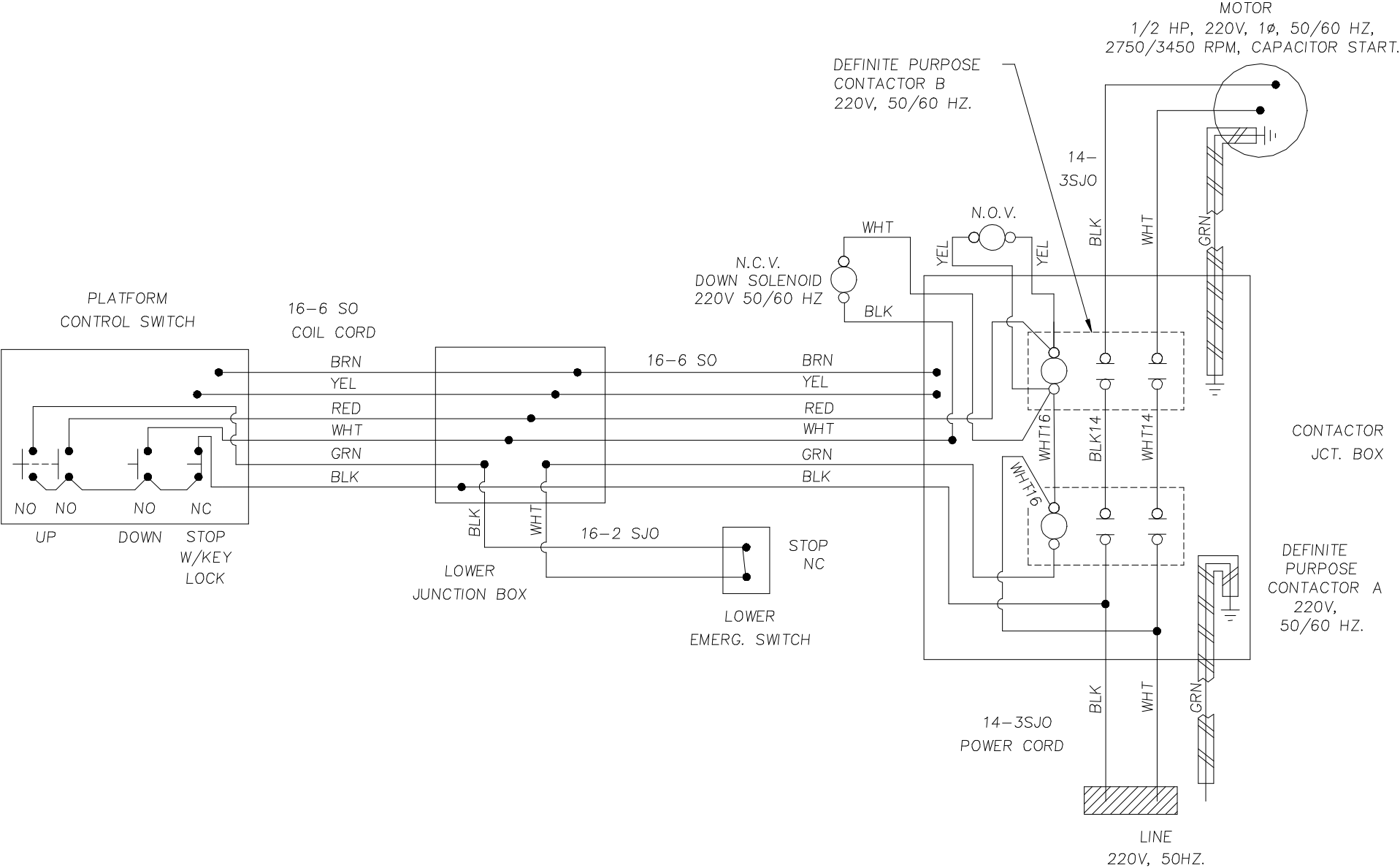


PLC/PLI/EUP
 AC WIRING DIAGRAM – TUV
 BARNES POWER UNIT

FOR 220V – 50Hz APPLICATIONS.

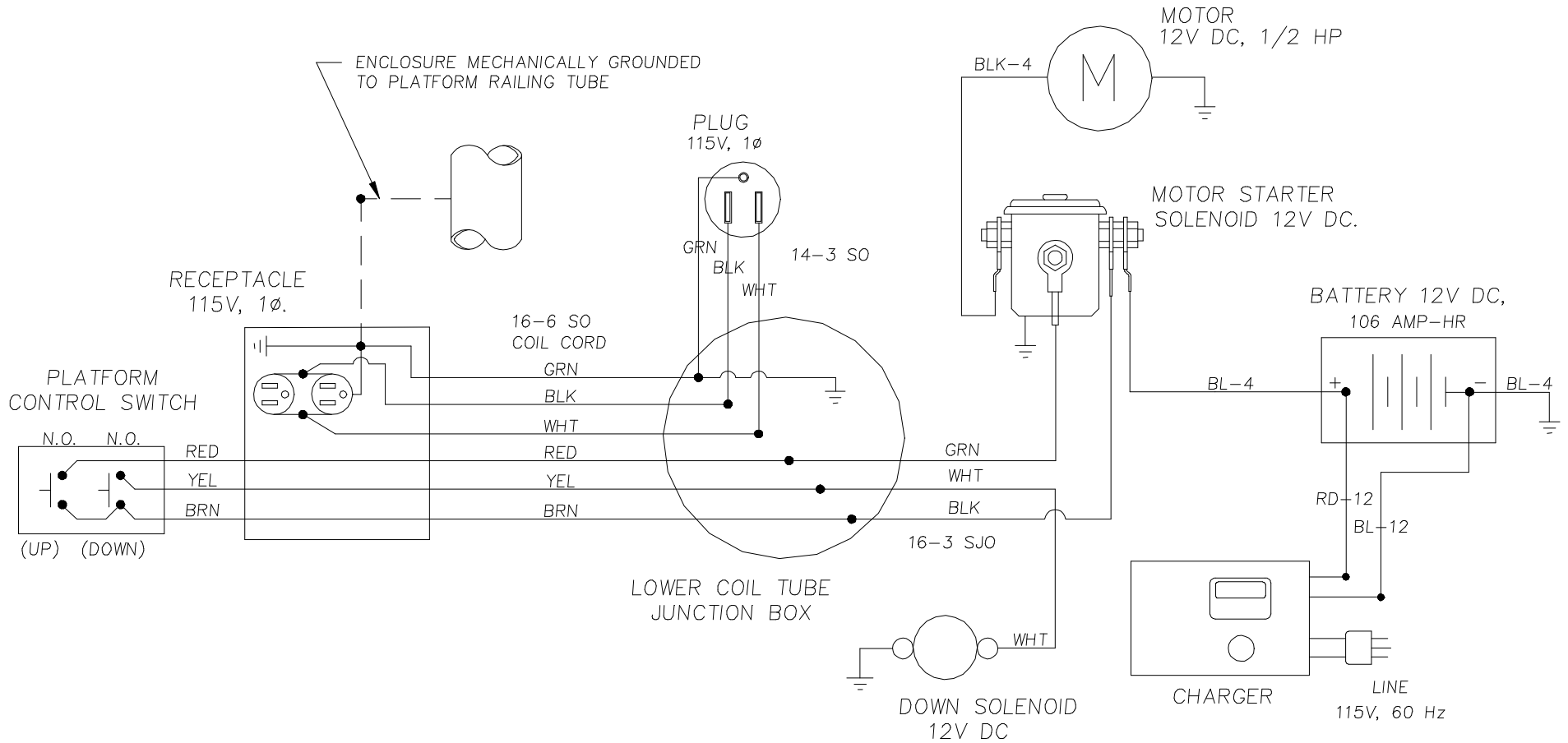


PLC/ PLI/ EUP
 AC WIRING DIAG - NOVON
 BARNES POWER UNIT



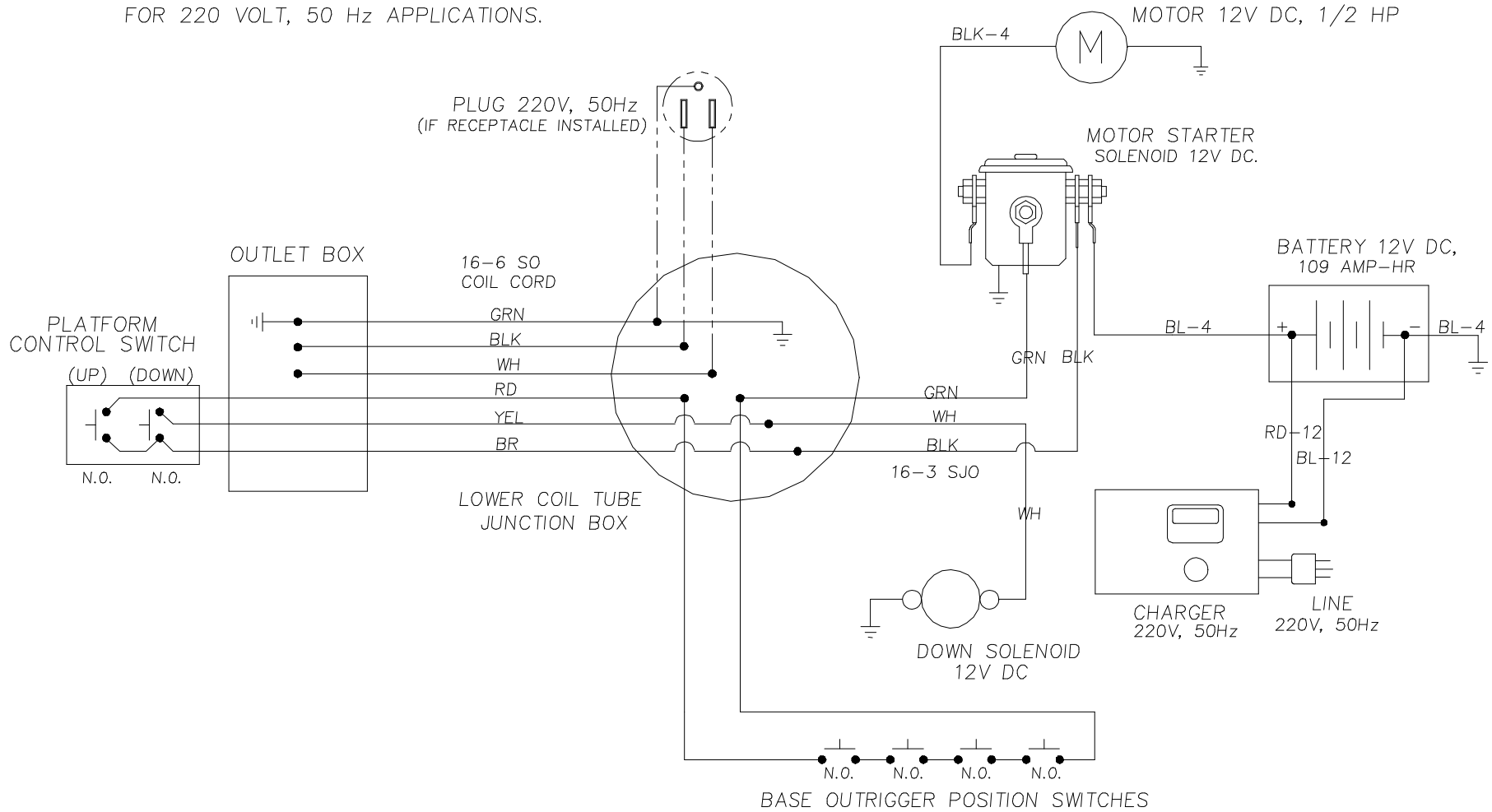
PLC/ PLI/ EUP
 DC WIRING DIAG
 W/ PB OPT.

NOTE: FOR 115V - 60Hz APPLICATIONS.

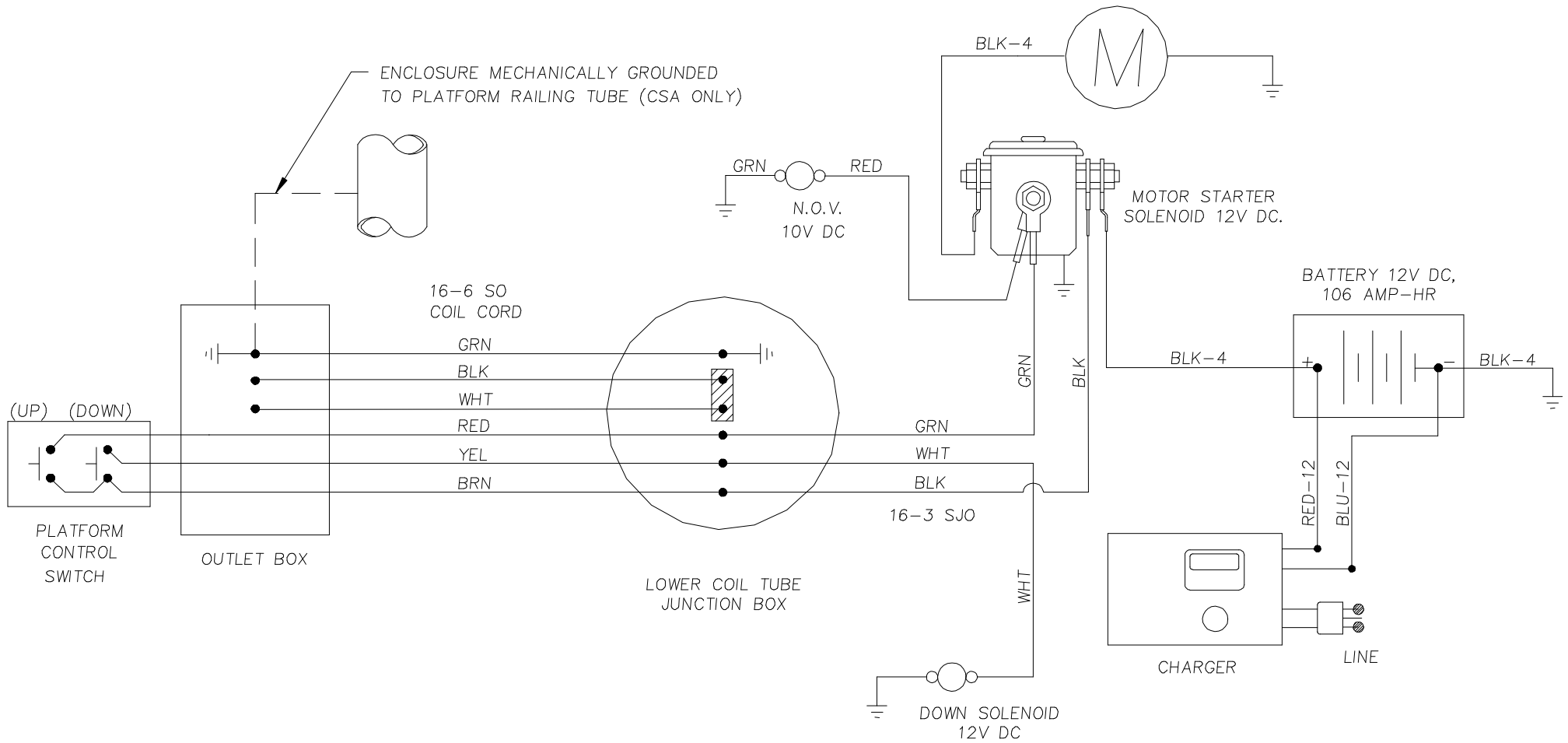


PLC/ PLI/ EUP
 DC WIRING DIAGRAM - (FOR AUSTRALIA)
 W/PB OPTION

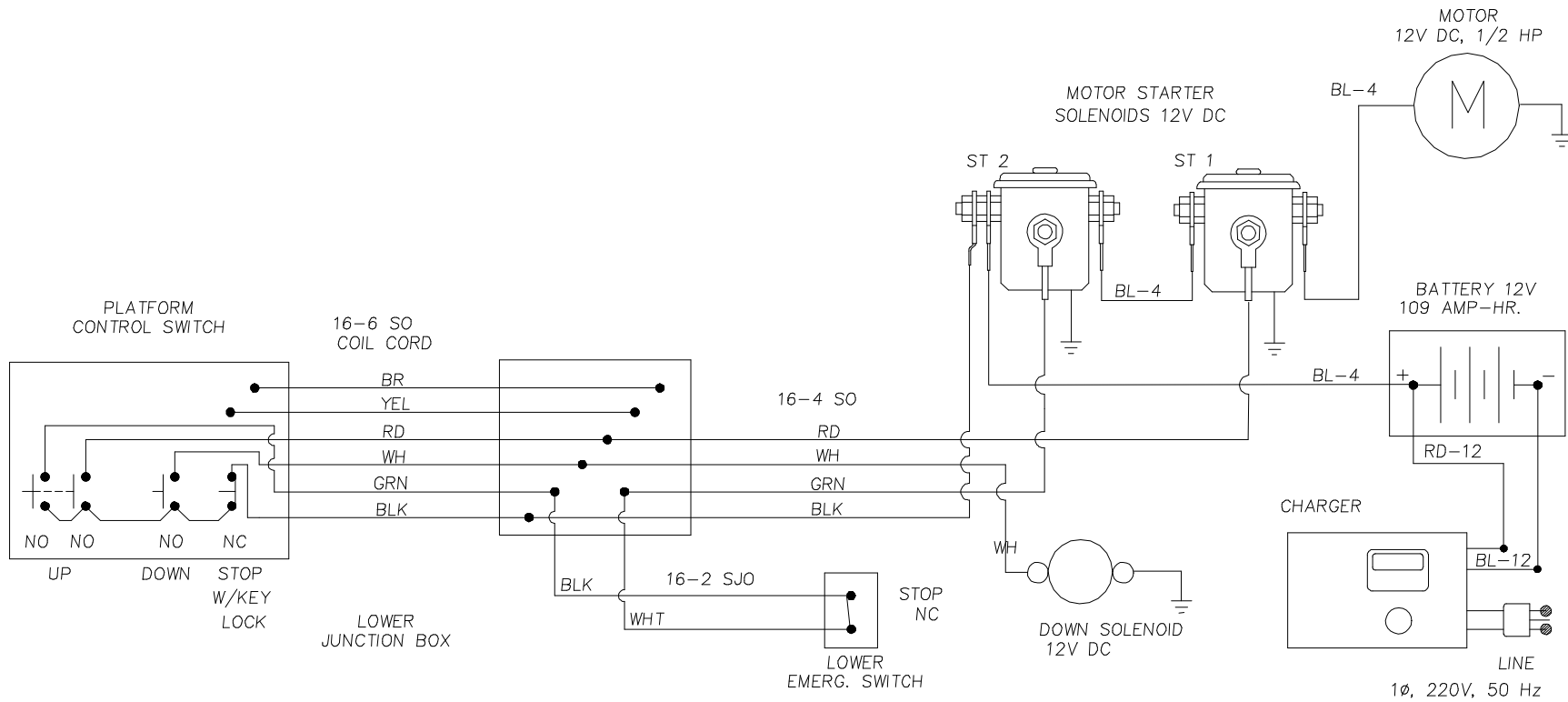
FOR 220 VOLT, 50 Hz APPLICATIONS.



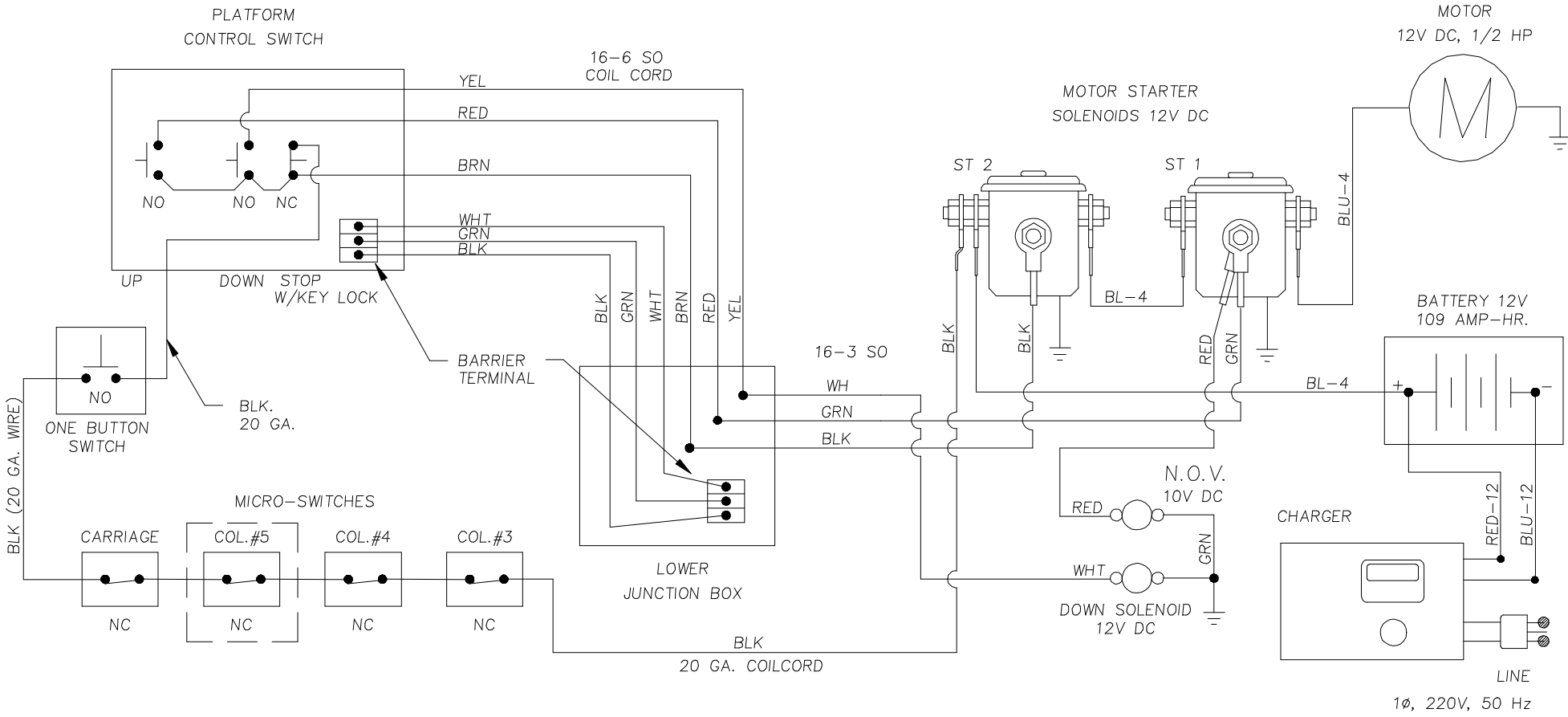
PLC / PLI / EUP
 DC WIRING DIAG - FOREIGN
 NO P.B.
 MOTOR 12V DC, 1/2 HP



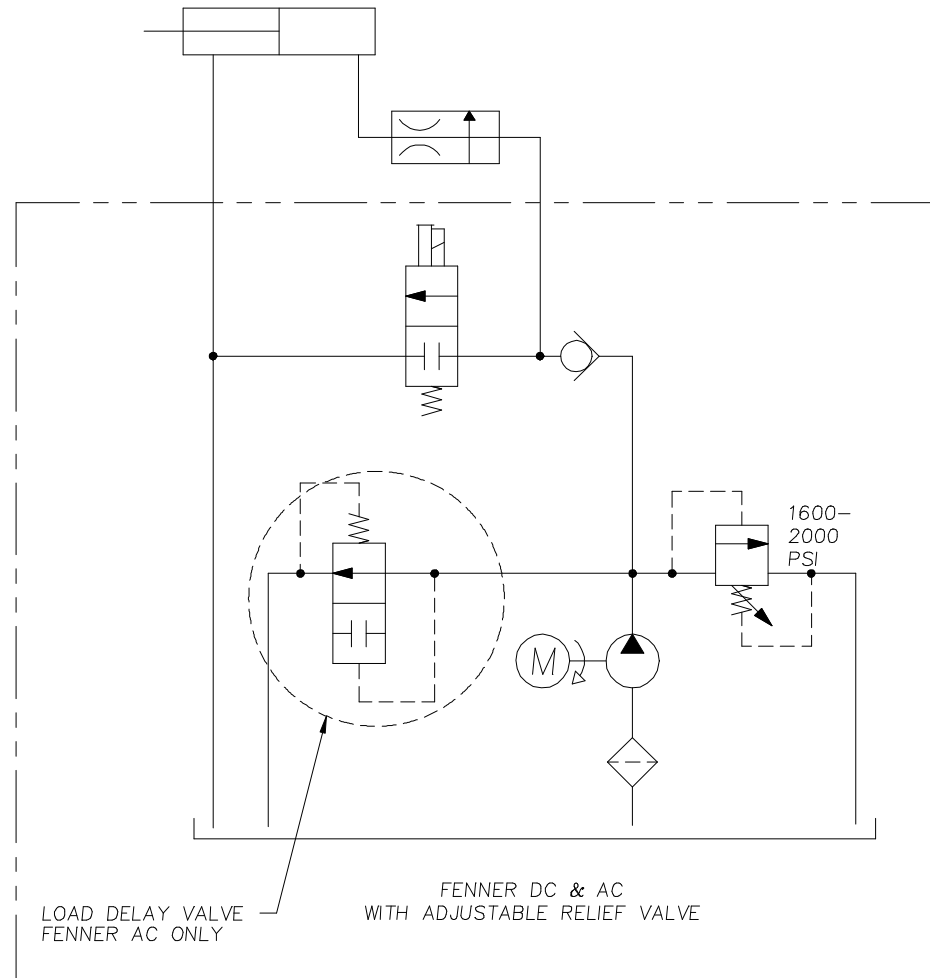
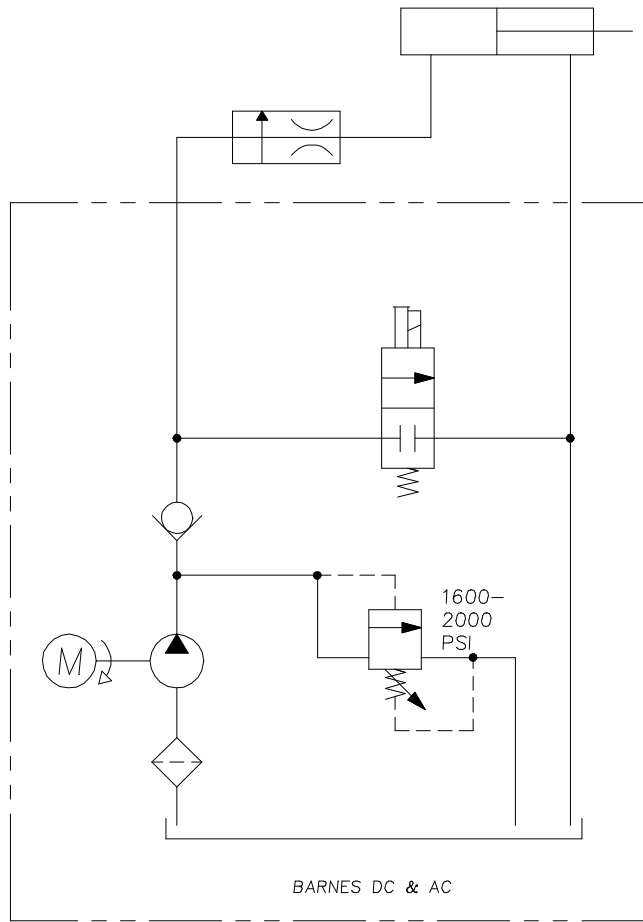
PLC/ PLI/ EUP
DC WIRING DIAG – NOVON, FRANCE



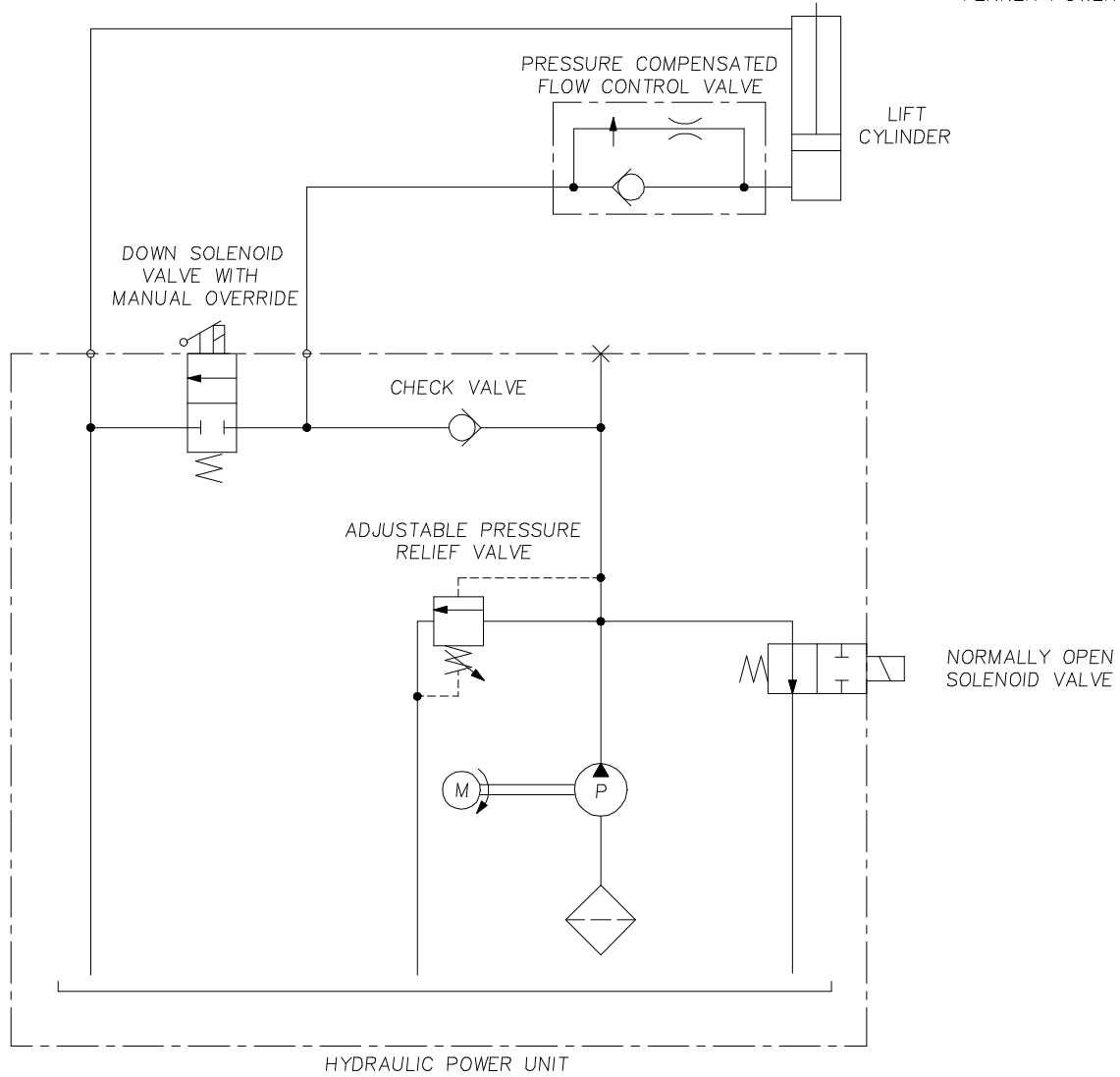
PLC / PLI / EUP
DC WIRING DIAG - TUV



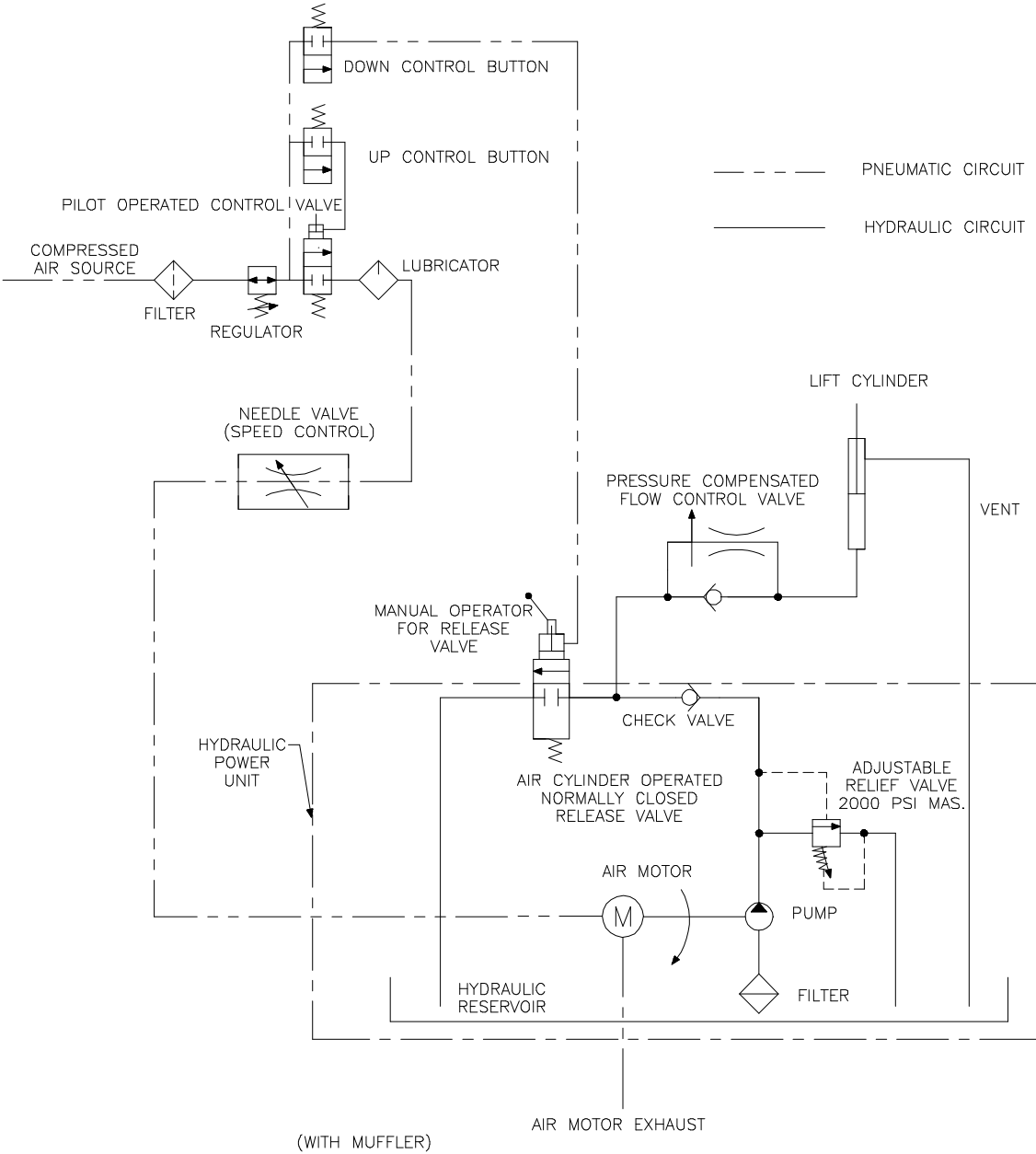
PLC/PLI/EUP
HYDRAULIC SCHEMATIC



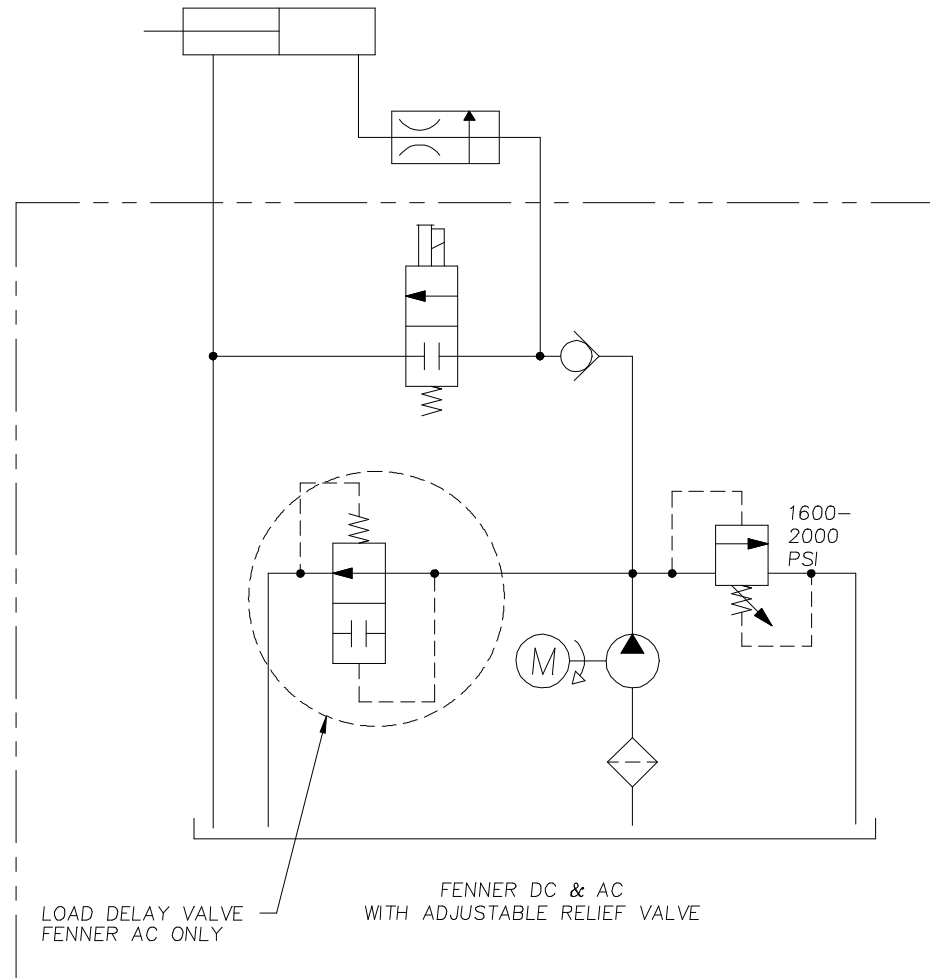
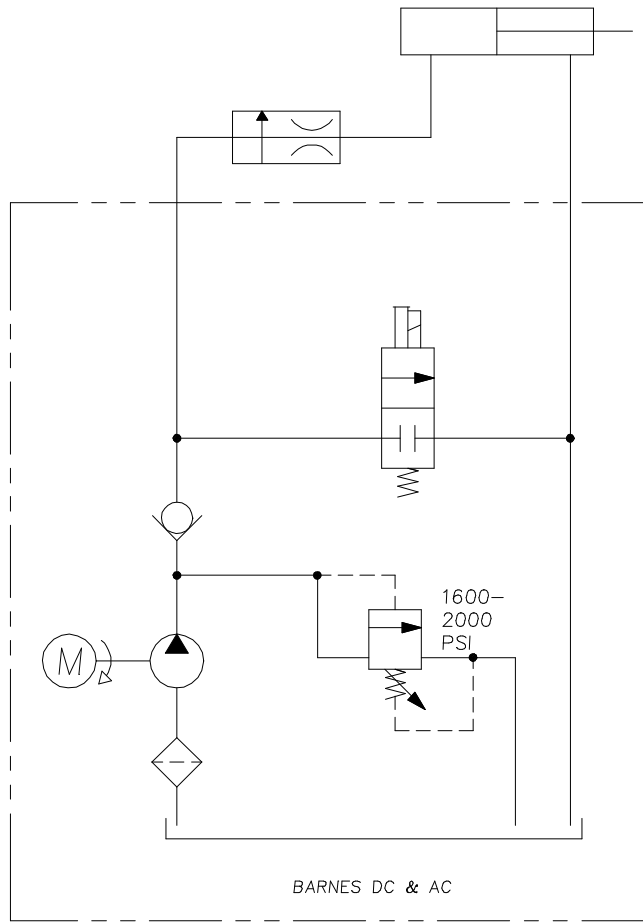
AWP PLI92 PLC92
HYDRAULIC SCHEMATIC
FENNER POWER UNIT (AC&DC)



PL/ PLC/ PLI
 PNEUMATIC / HYDRAULIC SCHEM



PLC/PLI/EUP
HYDRAULIC SCHEMATIC



AWP PLI92 PLC92
HYDRAULIC SCHEMATIC
FENNER POWER UNIT (AC&DC)

