

Genie[®]

A TEREX BRAND

User Guide

Tech Pro™ Link

**First Edition
Third Printing
Part No. 1276689GT**

Introduction

Important

Basic mechanical, hydraulic and electrical skills are required to perform most procedures. However, several procedures require specialized skills, tools, lifting equipment and a suitable workshop. In these instances, we strongly recommend that maintenance be performed at an authorized Genie dealer service center.

Compliance

Contains:
FCC ID: 2AISP-1274140
IC:22906-1274140



FCC compliance:
This device complies with Part 15 of the FCC Rules. Operation is subject to the following two conditions: (1) this device may not cause harmful interference, and (2) this device must accept any interference received, including interference that may cause undesired operation.”

Changes or modifications not expressly approved by Terex USA LLC could void the user's authority to operate the equipment.

ISED compliance:

This device complies with Industry Canada license-exempt RSS standard(s). Operation is subject to the following two conditions: (1) this device may not cause interference, and (2) this device must accept any interference, including interference that may cause undesired operation of the device.

RF exposure information:

Reported SAR value :0.11W/kg,
next to body. 0 mm

Technical Publications

Readers are encouraged to notify Genie of errors and send in suggestions for improvement. All communications will be carefully considered for future printings of this and all other manuals.

Contact Us:

Internet: www.genielift.com
E-mail: awp.techpub@terex.com

Copyright © 2017 by Terex Corporation

First Edition: Third Printing, August 2018

Genie is a registered trademark of Terex South Dakota, Inc. in the U.S.A. and many other countries.

“Genie® Tech Pro” and “SmartLink” are trademarks of Terex South Dakota, Inc.



Safety Rules



Danger

Failure to obey the instructions in the appropriate Operator's Manual on your machine will result in death or serious injury.

Many of the hazards identified in the operator's manual are also safety hazards when maintenance and repair procedures are performed.

Warning

Do not submerge or subject the Tech Pro Link to pressurized fluids. To clean the Tech Pro Link, wipe with a damp cloth, using water or mild detergent. Completely dry before storing.

The Genie Tech Pro Link comes with factory installed software. For updates, please refer to Software Installation.

Do Not Perform Maintenance or Repairs Unless:

- You are trained and qualified to perform maintenance and repairs.
- You read, understand and obey:
 - manufacturer's instructions and safety rules
 - employer's safety rules and worksite regulations
 - applicable governmental regulations
- You have the appropriate tools, lifting equipment and a suitable workshop.

Safety Rules

Kit Components

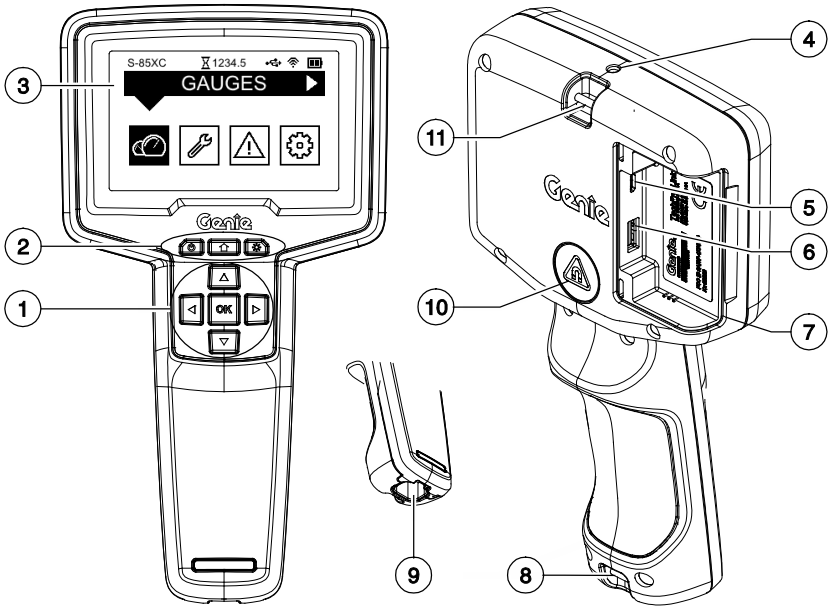
The full boxed kit is P/N 1276686GT and includes:

- Tech Pro Link
- User manual
1276689GT
- USB cable
1276688GT
- Wrist lanyard
1276687GT
- Databus Harness Cable
1275739GT
- USB Thumb Drive
1284465GT

Available Accessories

- SmartLink retrofit harness
1275740GT

Key Features



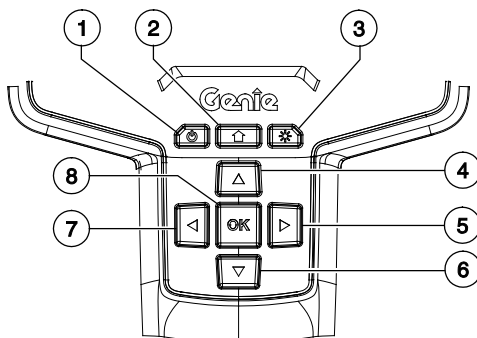
- 1 Directional arrow key pad, up/down, left/right, OK button
- 2 Power, Home, Flashlight buttons
- 3 Display
- 4 Flashlight
- 5 USB connection - Micro B

- 6 USB connection - Type A
- 7 USB access door
- 8 Lanyard attachment point
- 9 Databus harness connection point
- 10 Magnet mounting surface
- 11 Lanyard attachment point



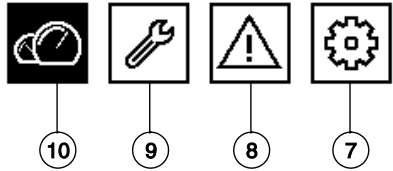
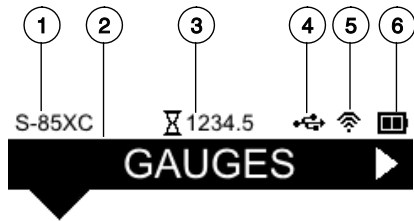
Keypad Legend

Keypad Function Legend



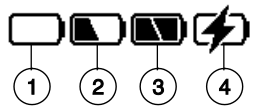
- | | |
|---|--|
| <p>1 Power Button
Press and hold for 1 second to power on. Press and hold for 3 seconds to power down.</p> | <p>4 Up Button
The Up key will move menu selection upward or increased values.</p> |
| <p>2 Home Button
Returns display to Home screen.</p> | <p>5 Right Button
The Right key will scroll through home screen icons to the right.</p> |
| <p>3 Flashlight Button
Press and hold for 2 seconds to power on the flashlight. Press and hold for 1 second to power off. When powered by the internal battery, the flashlight will automatically power down after 2 minutes to save battery life.</p> | <p>6 Down Button
The Down key will move menu selection downward or decreased values.</p> |
| | <p>7 Left Button
The Left key will scroll through home screen icons to the left and back out the menu to the previous screen.</p> |
| | <p>8 OK Button
The OK button will select highlighted menu items and confirm value changes.</p> |

Home Screen Legend



- 1 Model
The model of the machine that the Tech Pro Link is connected to.
- 2 Title bar displays the name of the selected menu.
- 3 Machine Hours
The current machine hours displayed in the format 12345.6
- 4 USB Symbol
Indicates a USB thumb drive is detected.
- 5 Wi-Fi Symbol
Indicates Wi-Fi is enabled.
- 6 Battery Level/Charge Status
- 7 Settings Menu
- 8 Faults Menu
- 9 Maintenance Menu
- 10 Gauges Menu

Battery Level/Charge Status



- 1 The empty battery image is displayed when battery charge is less than 30%
- 2 The half battery image is displayed when battery charge is between 30% and 70%
- 3 The full battery image is displayed when battery charge is above 70%
- 4 The battery charge symbol is displayed when connected to a power source via either the databus harness or the USB Micro B charging port.



Home Screen Legend



Settings Menu

- Calibration
- Speed / Threshold
- Model and Option Selection
- Battery Type
- Feature Selection
- Display Settings
- Units / Languages
- Software Update



Maintenance Menu

- System Information
- Real Time Machine Data



Gauges Menu

- Engine Gauges



Faults Menu

- Active Faults
- Fault History
- Clear Faults

Tech Pro Connections

Equipment Databus Connection

The Genie Tech Pro Link includes a 4-pin connector in its handle for Power, Ground and CAN databus connection with Genie control systems.

The harness power connection also charges the internal battery.

USB Connections

USB Connection - Type A

A standard USB thumb drive may be connected to download machine data or upload new machine software.

USB Connection - Micro B

Use the USB cable included, to charge the internal battery.

Equipment Connector Locations

Compatible Genie equipment will be identified by the Tech Pro Link logo located next to one or more round 5 pin connection points.



Databus Harness Pin-out

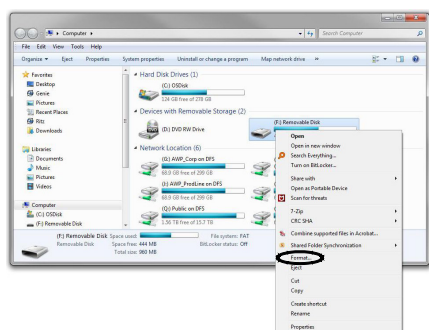
Equipment Circuit	4 Pin Connector	5 Pin Connector
Battery Voltage 12V / 24V	1	A
Ground	2	B
CAN High	3	D
CAN Low	4	E

Software Installation

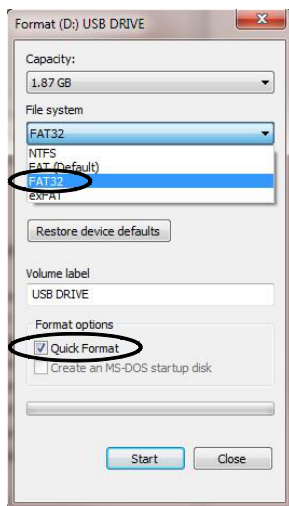
USB Compatibility

Tech Pro Link only supports certain types of USB thumb drive file systems. If the incorrect file system is detected, an error message will occur, **Try drive with FAT system.**

To correct this, install the USB flash drive into a PC or laptop. Under **Computer**, select the drive the USB thumb drive is installed on. Right click on the drive and select **Format**.



Select the **File system** drop down menu, select **FAT32**.



Verify that the box is checked for **Quick Format**.

Select **Start**.

Software Installation

Updating the Tech Pro Link Software

- 1 Install a USB thumb drive into a PC or laptop.
- 2 Launch a web browser on your PC or laptop. Type in the following IP address:
<http://firmware.genielift.com/>
- 3 Select the **Controller Type** drop down menu, select **Tech Pro Link**, then select **Search**.
- 4 Under **Application Firmware**, select the **.zip** file. Select **I Accept**, select **Open**.

Note: A window will open displaying a **.gff** file.

- 5 Save the **.gff** file to a USB thumb drive.

- 6 Remove the USB thumb drive from the PC or laptop and insert it into the Tech Pro Link USB-Type A connection port.

Note: The Tech Pro Link must be turned off to enter Bootloader Mode. Press and hold the Power button for 3 seconds.

- 7 Press and hold the **Left** and **OK** buttons. Press the **Power** button until you see **Preparing System Bootloader Mode**.
- 8 Press the **up/down** arrows to navigate to the **.gff** file to be installed. Press **OK** to install the file.
- 9 After the software has been updated, remove the USB thumb drive.

Software Installation

Updating the Machine Software Using the Tech Pro Link

- 1 Install a USB thumb drive into a PC or laptop.
- 2 Launch a web browser on your PC or laptop. Type in the following IP address:
<http://firmware.genielift.com/>
- 3 Select the **Machine Model** drop down menu, select the model of the machine to be updated, then select **Search**.
- 4 Under **Application Firmware** and / or **Bootloader Firmware**, select the **.zip** file. Select **I Accept**, select **Open**.

Note: A window will open displaying a **.gff** file.

- 5 Save the **.gff** file to a USB thumb drive.
- 6 Remove the USB thumb drive from the PC or laptop and insert it into the Tech Pro Link USB-Type A connection port.

Note: The Tech Pro Link must be turned off to enter Bootloader Mode. Press and hold the Power button for 3 seconds.

- 7 Connect the Tech Pro Link to the machine.
- 1 Turn the key switch to ground control and pull out the red Emergency Stop button to the on position at both ground and platform controls.
- 8 Press and hold the **Left** and **OK** buttons. Press the **Power** button until you see **Preparing System Bootloader Mode**.
- 9 Press the **up/down** arrows to navigate to the **.gff** file to be installed. Press **OK** to install the file.
- 10 Follow the prompts to complete the software update.
- 11 After the software has been updated, remove the USB thumb drive.

Specifications

Technical Specifications

Storage Temperature	-40 to +70 deg. C / -40 to +158 deg. F
Operating Temperature	-20 to +70 deg. C / -4 to +158 deg. F
Input Voltage 4 Pin Connector	5V-30V @1A
Input Voltage USB Micro B	5V@1A
Wi-Fi Range	50 feet / 15 m

Equipment Ratings

- Indoor and outdoor use
- Altitude up to 6500 ft / 2000 m
- Pollution degree 2
- Enclosure rated IPx4 (with USB access door closed)

This page intentionally left blank.



www.genielift.com

Distributed By: